

Upton St Leonards Life incorporating Church News

Issue 13

September 2015



THE FLOWER SHOW

Saturday 12 September

At the Village Hall

2.00 to 4.30pm

So you have got something like 12 days left to get your cakes baked, prepare your vegetables and flowers, complete your knitting, print your photos!

Can you help make this year's event one of the best in recent years?

There are two ways to support this Village showpiece event: enter into one of the hundred-odd classes (Show Schedule from the Post Office or online at <https://www.facebook.com/uslflowershow>) and attend the Show to see the wide variety of exhibits, listen to the Cotswold Big Band whilst trying the bouncy castle, face painting, skittles competition in the BMI, side stalls, book stall, ice creams and usual refreshments.

The exhibits are for all ages and range from pictures, photos, crafts, cookery, flowers and vegetables. Have you the longest runner bean? Could you give Mary Berry a run for her money? Have you more pickles than Eric? Does your van Gogh? Your Flower Show needs You! So please enter or at the very least come and have a look.

Support our 60th Show, a non-profit making event run by volunteers.

USL Life is a year old!

Are you thinking "Goodness, has it been going that long!" Or maybe "seems to have been around for much longer than that!"

Whatever, this is edition No 13, and our first issue came out for September 2014.

Inside you can see some of the USL Life team celebrating at our 1st birthday party.

You can also read about a new review group we'd like to set up, to give us feedback and help us improve. --- Page 6



More from the

FLOWER SHOW

Oops!

Were your peanut butter cookies for the flower show a gooey mess??

AMENDMENT to the flower show schedule recipes
110 & 111: PEANUT BUTTER COOKIES MEN AND WOMEN
After the sugar and butter are creamed together add flour
as well as all other ingredients.

Apologies for the mistake! The Flower Show Committee

Help needed!

We would be most grateful for any offers of cakes or scones etc. for the refreshments, and for the flower show, any articles suitable for the Book Stall, and bottles for the Tombola.

We desperately need your help to set up & run the show both on Friday & Saturday.

As advertised in last month's newsletter lots of help is also needed to take it all down after 5pm on Saturday

Can you help please?

If you can help please contact
Peter Macey or Carol Evans

Thank you

WHAT'S BEEN HAPPENING IN THE VILLAGE?



*At the
BMI*

The first music quiz to be held at the BMI took place in July.

There were a total of 12 teams answering some

interesting questions posed by Eric Williams, the regular quiz master. This quiz was slightly different from the ones that are normally held, and everyone enjoyed the evening. It's quite funny when you "know that tune", but can't remember who sang it!!

Some of the questions had everyone pondering and they were quite challenging. The quiz was won by AKAK. The proceeds of £103 on the night including a raffle will be donated to the BMI nominated charity for 2015-2016 which is "Duchenne Muscular Dystrophy".

The autumn quiz which normally takes place in September has been postponed until Saturday 7th November owing to the Rugby World Cup, and the fact that England play their games on a Saturday night, but we look forward to seeing you then.

 **VOSA**
Family Run Business:
Est. In 1968

 *Fast, Friendly
& Dedicated Service
In Your Local Area*

CEDAR MOTOR HOUSE LTD
Grove Court, Upton Hill
Gloucester GL4 8DA
01452 617240 or 07976 322735

MOT TESTING WHILE YOU WAIT FOR PETROL
AND DIESEL VEHICLES
Diagnostic Fault Code Reading.
Vehicle Servicing & Mechanical Repairs.
Clutches & Timing Belts Replaced, Top Quality Tyres,
Batteries & Exhausts Fitted AT Competitive Prices.
Insurance & Accident Repairs.
Welding Service.

Servicing for New & Used Vehicles Using Genuine Parts
If Required, at Much Lower Rates than Main Agents. All
Parts and Repairs Complying with Manufacturers
Warranty Requirements.
Lube Service from £89 incl VAT
Interim Service from £129 incl VAT
Full Service from £175 incl VAT

*We are situated on Upton Hill in Upton St Leonards.
Grove Court is 100 yards past the Kings Head Pub on
the right hand side. Collection service available.*

 **J. BIRD**
CHIMNEY SWEEP

**Traditional and Power Chimney
Sweeping from £35**
Open Fires, Boilers, Cookers and
Stoves Serviced
Chimney Pots, Cows and Bird Guards Fitted
Flue Liners and Stoves Installed to
Latest Regulations
Cctv Chimney Camera Surveys

PHONE ME TODAY FOR AN APPOINTMENT
01452 521732
07973 905151
sootybloke@blueyonder.co.uk

**Painswick
HAIR
dressers
and
BARBERS**

**Beauty without Cruelty
Hair, Barber and Beauty
Salon**

Open Monday-Saturday
Outstanding stylists

Weddings catered for:
book the whole saloon
for the bride and her
party!

Manicure - Pedicure
Beauty and Natural Health treatments

**The Painswick Hairdressers
and Barbers**
01452 668519

email:thepainswickhairdresser@gmail.com
Follow us on Twitter: @Painswickhair
You can also 'like' us on Facebook, search for
ThePainswickHairdresserandBarber

What's been happening in the Village, continued ...

BMI Summer Skittles Competition

The competition finished at the end of July after seven weeks of friendly matches. It was nice to see some new teams this year, including one from USL Life, who won two of their six games. For a team who had never played a game of skittles before, this was no mean feat. Another of the new teams this year was USL MCC, who played extremely well, winning five of their six games and going through to the semis.

The semi finals were played on Tuesday 21st July, with Scotties Lot and USL MCC going through to the final. After an exiting last game, which for the first five legs were extremely close, this was eventually won by Scotties Lot. Both teams had a great time. We expect to see them again next year vying for the honours!

Once again, as last year, Lisa Robins had the highest score for the ladies. Phil Mogg had the highest score for the men.

The trophies, including the "The Knuckles Cup" for the winning team, were handed out by Pat Brown. And after the refreshments, the competition came to a close for another year.

Details for next year's competition will be available in April, so plenty of time for you to raise a team for 2016.



The winners - Scotties Lot - take the Cup



Runners-up - MCC*

(*Midlife Crisis Club!)

Twyver WI We always look forward to our July meetings as we celebrate summer with refreshments of strawberries and cream, cake and a little fizz to complete the enjoyment. The hall was beautifully arranged with small tables each decorated with summer flowers.

Our speaker for the evening was Cheryl Brown from the Alzheimer's Society who talked about dementia and all its problems, a very important subject given that most of us will encounter dementia in a friend or relative, and most of us know too little about it.

We were told about the National Federation AGM at the Royal Albert Hall. This was the one hundredth anniversary meeting and for this special occasion The Queen, Princess Anne and the Countess of Wessex attended. There was a celebration cake, cut, of course, by the Royal guests. It had been an extremely good time for all.

Our next meeting on Sept 14th at the Village Hall will mark our own 50th Anniversary along with our celebration of NFWI's 100th.

Little Court Cottages

Cottages for long rent, and self-catering accommodation for short breaks, in Upton St Leonards, perfect for visiting friends and family.

Email: info@littlecourtcottages.co.uk

Tel: **01452 615150**

www.littlecourtcottages.co.uk



THE PAINSWICK PHARMACY



NEW STREET, PAINSWICK
01452 812263

Delivery service available
call for more information

Providing NHS Services



JOHN DANDY MOTORS LTD
Est. 1969

➔ MOTs, Servicing and Repairs ➔

➔ Free collection & delivery service ➔

➔ Free courtesy car ➔

(Subject to availability)

➔ Quality & value where it counts ➔

Goodridge Avenue, Gloucester GL2 5EA
(01452) 527340



What's been happening in the Village, continued ...

1st Upton St Leonards Scout Troop - Summer Camp 2015

This year's summer camp was at Llanthony in the Brecon Beacons. As it was July in South Wales it rained (a lot), but we had a full programme and achieved everything on it.

The sun shone on the day we went canoeing on the River Wye. Canoeing in the rain isn't as good. You're down on the water and the views are obscured. So, paddling downstream from Glasby to Hay-on-Wye in the sunshine was a pleasant experience. We saw sand martins nesting in the banks, herons and at least one kingfisher. There were also swans and ducks, and the occasional trout. We had time for a quick swim in the river off a gravel beach just upstream of Hay-on-Wye.

The rain returned the following day when we went pony-trekking, but the horses didn't seem to mind.

The weather improved a little on our last day as we hiked to the tops of Corn Du and Pen y Fan. At 886m above sea level, Pen y Fan is the second highest peak in Wales and the highest in southern Britain.

We parked the minibus by Nant Cwm Lluch, a stream that flows from the glacial lake at the feet of Corn Du and Pen y Fan, and followed the route known for a fateful trip by little Tommy Jones and his father to visit to Tommy's grandparents at Cwm-Lluch farm in August 1900. They became separated and Tommy was lost. The search for Tommy lasted 29 days and attracted national interest. A granite obelisk marks the spot where Tommy's body was found.

The tops of Corn Du and Pen y Fan were covered in cloud, and a strong westerly wind was blasting the summits as we got to the top. We didn't hang around for long and found the col between the two peaks to be more sheltered from the wind. After the obligatory photo-shoot on Pen y Fan's summit cairn, we returned to the col and ate our lunch. We retraced our route back down to Llyn Cwm Lluch (the glacial lake) and made our way back down to the minibus and from there home to Upton St Leonards.

Paul Emmett, Leader, 1st Upton St Leonards Scout Group

Editor: Wot, no pictures of wet or exhausted scouts?



THE PIG ROAST

What a beautiful summer evening we had for the Annual Pig Roast at the BMI Club! The sun shone and everyone was happy, hungry and looking forward to the wonderfully cooked pork joints.

Mike Long was the chef and as usual did a brilliant job.

The ladies and gent serving us were rushed off their feet, but remained full of cheer throughout the evening, as they piled our bread rolls full with mouth watering pork, crackling and apple sauce. So a big thank you goes out to Alec and Mary at the BMI and their staff behind the bars, Mike and all the others that helped make the evening a huge success. It was great to see both bars, the skittle alley, the patio and most of the car-park full of happy eaters and drinkers!

Carol Evans



Letter to the Editor

Trevor Hall writes:

"Having received and read USL Life, we want to say how refreshing it is, and we pay tribute to the whole USL Life team for their hard work.

Reading the articles, especially the cricket report, makes me wonder how many villagers are aware of the Ladies cricket team which flourished in the Village some 65 or so years ago? Some of the players are still around and living in the Village today; others will be well remembered. Here is a team photograph."



Nancy Blake Jackie Blake Sheila Whitley Lealey Willey Margaret Tombs Jean Long Mrs Joan Aas
Rachel Stait Phyllis Warner Jean Randall Hilary Aas Mary Stanbury Nancy Stoker

Editor: Fantastic picture, Trevor. Rachel is easily recognisable! The Ladies team was acknowledged in the Cricket Club's centenary booklet (which you can now read on the internet: <http://usleonards.play-cricket.com>). I don't suppose the booklet's author knew there was a picture of the Ladies team, otherwise he'd have printed it. I shall add the picture to the internet version. There was another Ladies team that lasted for a few years in the late 1990's.

RECENT PLANNING APPLICATIONS

April to July

Steps House, Portway - Ref S.15/0679/FUL

Change of use of outbuilding to single detached residential dwelling and erection of two storey extension

Teckels Cottage, Stanley Walk - Ref S.15/0847/HHOLD

Small extension to the side of the existing kitchen.

17 Bondend Road - Ref S.15/1013/FUL

Erection of two new dwellings.

31 Perry Orchard - S.15/0909/TPO

Trimming a mature ash tree subject of a preservation order

27 Woodland Green - S.15/1212/HHOLD

Erection of a porch

Prinknash Abbey - S.15/1466/ADV

Signs on the A46 advertising the cafe (retrospective)

Rance Cottage, Rance Pitch - S.15/1631/HHOLD

Alterations to windows and dormers and erection of garden room / store

46 Perry Orchard - S.15/1673/HHOLD

Single storey side extension

PO & Shops, Churchfield Road - S.15/1677/FUL

Erection of 2 houses and hard and soft landscaping round existing shops and flats

Oldway House - S.15/1671/FUL

Erection of dwelling within grounds of existing house.

The Granary Pincott Farm, Nuthill - S.15/1843/HHOLD

Proposed new garage with accommodation over

All current planning applications can be seen at Ebley Mill or on the Stroud Council website

PS: There was only a brief Parish Council meeting in August, looking at the most recent planning applications (above)

Hill Farm Cottages

Upton Hill, Upton St Leonards, GL4 8DA

Self-catering cottages well furnished and equipped with the comforts that will make a stay in the Cotswolds one to remember fondly. Each cottage has full central heating and a colour television in the lounge. Towels, tea towels and attractive bed-linen are all provided for you; all you need to bring is food.

01452 614081

hillfarmcottages@hotmail.co.uk



The BMI Club

(Est 1898)

Bondend Road
Upton St Leonards

Members Club, new members welcome.

Two bars, wide screen TV with Sky/BT Sports. Snooker /Pool Tables.Skittle Alley. Regular entertainment nights. Function room hire.

Annual Fee £10 plus £5 joining fee.
Senior Citizens half price

To join just call in
and see Alec our Steward for details.
Open Mon-Fri lunchtimes & evenings.
Sat-Sun Open all day.

Tel. 01452 616384

Do you need help around your home?

"Being local, I'm a very Handy Man!"



With over 30 years experience, here are just some of the jobs that I can do to help you improve and maintain your home.

- | | |
|----------------------------------|-----------------------------------|
| Painting & decorating | Hall, stairs & landing |
| General maintenance | Carpentry |
| All repairs | Paper hanging |
| Tiling SPECIALIST | Bathroom installations |

Friendly, Caring, Trustworthy Service from a Friendly, Caring Person at Really Friendly Prices.

For a FREE quotation please ring me, David Holder on
Tel: 01452 611866 Mobile: 07977 099996
or Email: holdermaxine@aol.com

DJH Home Services, Gloucester Established 1984

USL Life is one year old!

It has been quite a thrilling journey for those of us on the team. A few late nights trying to get the newsletter into shape, anxious moments about will we have enough material to fill it, worries about how we can keep it bright and interesting. But most of the time it has been enjoyable and rewarding. We have received many expressions of thanks, congratulations and best wishes ever since the first issue went out, plus some, but actually very little, criticism. We know we could do even better, so in an effort to understand what we could do to improve, we are hoping to start up a review panel, see below.

In August we held a Wayzgoose. That's a lovely old word that belongs to the printing industry. (A wayzgoose was an entertainment given by a master printer to his workmen each year on or about St Bartholomew's Day. It marked the traditional end of summer and the start of the season of working by candlelight. Later, the word came to refer to an annual outing and dinner for the staff of a printing works or the printers on a newspaper. St Bartholomew's day is actually 24th August and our party was on the 16th.) The picture below shows some of the team enjoying themselves!



Left to right in the picture are:
Mike Blanch (Distributor)
Ian Crowe (Treasurer)
Jan Black (Advertising admin)
Andy Russell (Editor)
Ros Stewart (Distributor)
Linda Munnoch (Feature writer)
Peter Wilson (Chairman & Editor)
Teresa Clarke (Feature writer)
Andrea Dawson (Editor)

Join our new review panel?

This is another chance to have your say on your Newsletter.

Would you like to join a new informal review group that looks at USL Life and gives us feedback? This group doesn't need to hold regular meetings; maybe just a chat at the BMI over a drink? Or not even that - you could simply pass your comments to one of the group to be added to a consolidated report.

We'd like this group to look at past issues of USL Life and comment on what was good and what was not so good, content, layout and presentation, style, anything. We want this group to be made up of people who are not in the current production team.

You can contribute frequently, or only occasionally. We'd hope to appoint one or two people as 'conveners' of the group who would produce the reports to us.

The advantage of doing it in a group is that you can feel that it isn't just you who

thinks this or that could be improved, you can chat to someone else about it first.

To join this group, contact Andy Russell

Of course you can make your comments directly to us without going through such a review panel. You can put your suggestions in the letter box beside the Village Hall main door, or send an on-line message using the "contact us" link on our website.

Beauty2Go
Mobile hair & beauty therapist.
In the comfort of your own home
Free consultation
20 years of experience offering a
professional & friendly service.
Call Joanne 07873 261163
or 01452 909492


Bourne Baking™
Cupcakes, Layer Cakes and Celebration Cakes
for all occasions. Unique designs.
Friendly and professional service.
47 Bondend Road, Upton St Leonards
www.bourne-baking.co.uk
Tel: 07555 081747

**D J COOK
PLUMBING SERVICES**
**SMALL JOBS WELCOME
Competitive rates**
**01242 514793
07713 778627**
email:
djcookplumbing009@gmail.com

CHURCH NEWS



Dear Friends

We have a new start in our Diocese of Gloucester as we welcome our new Bishop, Rachel Treweek who became the first woman in the Church of England to be consecrated as a diocesan bishop. She is to be inaugurated at a special service on 19th September in Gloucester Cathedral.

As September is here, we are used to making various fresh starts as autumn comes along. Summer has, I hope, been for most of us, a time for some rest - it's always a difficult time to get people together to do something, but as days close in and the warmth begins to diminish, we can start working for the future.

So best wishes and prayers go to Bishop Rachel and all those who are making a new start - to those starting school for the first time, to those moving up to new schools, those entering the world of further education or going on to university, where the emphasis shifts from being taught to having to learn on your own initiative. Perhaps particularly to those starting work for the first time where the well-being of the workforce doesn't have the priority long given to the well-being of pupils, and the next holiday is a lot further away than the end of term ever was.

Plenty of people are making a new start, enjoying or hating a new year, but plenty of people are just stuck in the same routine, with nothing ever changing. Too often those two worlds never meet, or they meet in an atmosphere of hostility and suspicion, between young and old, between the fortunate and the unfortunate.

So, let's ask ourselves, who am I in contact with? I'm very aware that the people with whom I am most involved are at changing points in their lives, be it getting married, having a baby, or saying farewell to someone they love. We may not all have much contact these days with people at school or college or university or those starting work; yet we and the whole of Christ's Church are called to pray equally for those whom we don't automatically come in contact with as for those we do.

I also ask, are we as the church in Upton St Leonards happy to be stuck in the same old routine, or are we looking forward to changing, developing and growing, as we become aware of a new year starting? What are we going to do this coming year? How are we going to change?

I believe the answer to that question should lie in our prayer together, in who we pray for and how we pray.

Prayer, quite simply, is focussing on God, first of all by getting our relationship with him right - "Hallowed be your name." As we begin to do that we will want to pray for what he wants to do in us - "Your kingdom come, your will be done, on earth as in heaven." The question, Will the Church stay in its old routine, or change, or grow, becomes What is God doing in this parish? (for which we have a special responsibility.) The challenge to us is whether we are prepared to be in that place where God wants and needs us to do his work.

September Church Diary

(Correct at time of printing but subject to change - please check details in pew sheets)

SUN 6th FOURTEENTH SUNDAY AFTER TRINITY
8.00am Holy Communion BCP
10.00am All Age Worship
(non-Communion)
12.00pm Baptism Service

SUN 13th FIFTEENTH SUNDAY AFTER TRINITY
10.00am Communion4All

Thu 17th 2.00pm Mothers Union (in church)

SUN 20th SIXTEENTH SUNDAY AFTER TRINITY
10.00am Communion4All
6.00pm Evening Service

SUN 27th SEVENTEENTH SUNDAY AFTER TRINITY
10.00am Holy Communion
(Common Worship)
12.00pm Wedding

So please pray for the people of God in Upton St Leonards, that each Christian may be where God wants her or him to be and may serve the people of this parish in the way that God wants.

The answer to that prayer might include St. Leonard's becoming solvent and our present Church becoming much more used, or it could involve us having to abandon the Church building altogether. That is God's choice, not yours or mine! It will certainly involve "members" (of each and every Church) becoming "ministers". Please pray for those of our congregation who have found a particular way to say yes to God's call. Pray that God will use them more to serve the people of this parish, that God's kingdom will come through what they do. And then, dare to say your own "yes" to God and let him work through you!

*Every blessing
Christine*

CHURCH NEWS

THE NEW BISHOP OF GLOUCESTER

Rachel Treweek was consecrated Bishop in July in a ceremony in Canterbury Cathedral. The top picture shows her (on the right) with the Archbishop and lots of other bishops.

She will be officially installed as our bishop at a service in Gloucester Cathedral on Saturday 19th September.



With arms wide open

Walking into somewhere new can sometimes feel overwhelming. Surrounded by lots of strange faces looking towards you, it can take a lot of courage to step into the unknown. But a warm welcome can make all the difference.

As the academic year begins again in September, hundreds of children are bracing themselves to start a new school. It can be a daunting time, and it is important that the teachers and pupils take on the responsibility to welcome them to their classes and to make sure that no one feels left out and no one is forgotten.

What a huge task to give to our children, but it is one which is central to our faith. Once Jesus' disciples were arguing about who was the most important. Stopping the argument, Jesus took a child in his arms and said: "Whoever welcomes one of these little children in my name, welcomes me." It is important to remember that we should be welcoming everyone equally - from the grandest king to the smallest child, because when we welcome them, we are welcoming God into our lives too. So when we see someone entering a new place - whether it is our classroom, office or neighbourhood, let us remember to welcome them with open arms.

ST LEONARDS CHURCH TOWER FLOODLIGHTING SPONSORSHIP

If you or your family wish to have the lights sponsored in celebration of a birthday or anniversary or for a loved ones life or any other reason then please contact Matthew Gibbs.

There is no set amount for this, just what you would like to give to the Church in order to help cover running costs. If you are able to gift aid any donation this will help us too.



Who's Who at the Parish Church

Priest in Charge:

Reverend Christine Birkett 627828
The Rectory, 12 Bondend Road, GL4 8AG.
rev.christine@uptonstleonardschurch.co.uk
Usual parish working days are Tuesdays and Fridays

Churchwardens:

- 1 Keith Robbins
- 2 Vacancy

PCC Secretary:

Roy Roberts

Church Treasurer:

Vacancy

Deanery Synod Representative:

Dorothy Cox

Bell Tower Captain:

Roger Fry

Mothers Union:

Rachel Hall

Church Cleaning Rota:

Claire Appleyard

Church Flower Rota:

Evelyn Rumsey

Electoral Roll Officer:

Naomi Stanley-Gunn

Julie Wareham moved into Bond End Farm last year and she has penned this piece on taking up gardening there.

Apex, aphids, acid soil...shooting, seedling, sessile... tap roots, tendrils, terminals...so much unfamiliar terminology to overload one's vocabulary with when ignorantly tackling the whole new world of gardening! These were pretty much all a mystery to me a couple of years ago, but armed with my Gardening Encyclopaedia (and Gardenersworld.com glossary, so I can understand it!), I now bravely wield my secateurs and loppers whenever I head out to love and nurture my plants, and do battle with the beasties and weeds.



Moving to Upton St Leonards, I instantly noticed how everyone's gardens and the public spaces are so wonderfully kept. The allotments are adorned with stunning roses, enclosing carefully tended veggie patches. Such care and attention goes into the beautiful outdoors we have here.

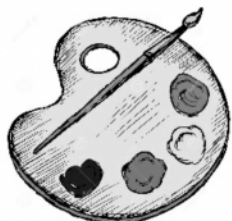
Bond End Farm became our home; a wonderful timber framed house that has stood strong for around 400 years and is steeped in history and lovingly preserved character. If only its beams could talk, there would



be a few stories to be aired! And part of its tale is told by the garden it stands in.

Our son was born within weeks of moving in and so I was not going back to work as a documentary film-maker for a while; instead I had a new mission on my agenda...learning to care for this garden we had inherited. I have only just teetered down the long road of learning to discover and identify a plethora of plants; from roses a hundred years old to tree peonies, camellia, iris, Japanese anemone, mock orange and so much more. There's also a wonderful variety of trees and shrubs, including oak, horse chestnut, walnut, smoke trees and even an acacia - my favourite!

Continued on the next page ...



Pavilion Painters - wanted!

The Pavilion Painters re-start after the summer break on Wednesday 2nd Sept, 2pm. The group meets every Wednesday from 2-4pm in the Pavilion, and needs new members. They say "we are a small group of painters, differing abilities, various media, who simply meet to paint and chat; there are no instructors - you do what you want. Please come and see us if you are interested in painting in the company of others." Ring Jill on 617591 or Sylvia on 618103

CHORLEY'S

GLOUCESTERSHIRE'S FINE ART AUCTIONEERS

Free auction valuations

Regular fine art & antiques sales

Insurance & probate valuations

01452 344499

enquiries@chorleys.com

www.chorleys.com

PRINKNASH ABBEY PARK GL4 8EU

N.T. Boothroyd Plumbing & Heating Est. 1986

**All Plumbing & Heating Work
Undertaken & No Job too small !**

**Boiler & Fire Servicing
Central Heating Systems
Landlord Certificates, etc.**

Glos: 01452 552192

Chelt: 01242 250479

Mob: 07816 103709

ntboothroyd@hotmail.co.uk



A La Carte Private Hire



Tel: 01452 813268

Mobile: 07748 235164

Sandra Walklett

*Any distance
Airports, Seaports, etc
Quotations without
obligation*



Gardening at Bond End Farm, continued ...

The old apple trees, which used to extend beyond the current boundaries, perhaps tell a tale of the farm's participation in local cider production in the 1800s. Now, as well as apples, there are pears, plums, cherries, figs, plus gooseberries, currants, raspberries and even mulberries bearing plentiful fruit. All of these, I have discovered, do not just simply keep themselves productive, but need care and attention throughout the seasons. This was news to me! Apparently, tending gardens is not just lawn-mowing, hedge trimming and pulling the occasion weed-looking growth out in the summer. Oh no, all these wonderful plants, trees and shrubs need attention - all year round!

My first port of call in discovering how much I had to learn was to join the Women's Farm and Garden Association. I promptly signed up for their rose and fruit tree pruning courses and spent a couple of days ignorantly massacring someone else's bushes and trees. But it was great fun and I learned how much creativity there is in shaping and crafting these specimens into bushes and trees of great flowering and fruiting splendour! Most of all, I discovered that most roses are really very hardy, with incredible tenacity and an indomitable will to live. One can miscalculate how much to reduce a stem by, or miss some of the dead, diseased or crossing branches to remove, or cut a stem at not quite the correct 45 degree angle away from the bud; but the hardy rose tends to just take it all in its stride and bounce back to bloom in abundance. It's grateful for the care, even though it is amateur. There's a wonderful satisfaction in toiling through the cold of winter, then observing spring buds develop into splendid blooms, full of the scent of summer.

Fruit trees are rather more complex, with rootstock playing a part in the correct pruning practice. I now know stone fruits such as cherries and plums should not be pruned in winter, but wait until after they have blossomed and borne fruit in early to mid summer to avoid rendering them vulnerable to disease, such as silver leaf or bacterial canker. And on the note of bad bacteria - don't forget to clean tools when working between different gardens to deter any spread of unwanted disastrous diseases!



Those with green fingers in the village will appreciate how fortunate I have been to meet Phil Keene, who has helped me attack over-grown hedges, brambles and nettles with a vision to clear the way to encourage a diverse garden. We are working to tend the beautiful landscaped beds, whilst planting and creating wild areas to encourage butterflies, bumble bees and other insects. His love and passion for growing all things green has inspired me and helped us to nurture the garden into a haven for birds, insects and visitors alike. It fills me with joy when guests staying in our little holiday cottage, Shamba Barn, take such delight in exploring the garden and appreciating its produce. Upton St Leonards is blessed with wonderful outdoor spaces and I sincerely hope that Bond End Farm contributes to that delightful part of village life.

USCAN walk - Sat 26 Sep

10am start from the Pavilion

It has been a while since the last USCAN organised walk. Join this one to visit places probably quite new to you, in the parish area and nearby:

The Moat - The Motorway Services

We will set off at 10am from the Pavilion Car Park. We will cross to Sneedham's Green and pass an old moat, once the site of a farmhouse. That leads to the Motorway Service area. You can see for themselves how different this is from the usual type. Have a cup of tea, locally made cakes, visit the produce shops, enjoy the quiet (yes - quiet! Right next to the M5) landscaped

grounds. The walk there will take about 40 minutes, about a mile. You can then choose to return to the Village the way you came, or use the road. Or you can follow the walk leaders who will return, with a bit of a climb, via a path just below Hatton Court. Either way you will be back well in time for all the World Cup and evening Bath v Gloucester rugby matches on the TV in the BMI!

Call Mike Blanch or Andy Russell to sign up!



USCAN has published a booklet of half a dozen walks in the Parish - on sale in the Post Office, or contact Andy Russell

This month we are featuring the historic buildings at

GASTRELL'S FARM

by Teresa Clarke



Wanting to find out more about some of the older properties in Upton St Leonards, I visited John and Jennifer Watts, the current 'caretakers' of Gastrell's Farm, on the Portway. John and Jennifer took the tenancy of Gastrell's from the previous resident Jack Millard, in 1975, John having been appointed Bailiff at Prinknash, a position he held from 1972 to 1985.

Other names connected with the farm include the Peters, Wiggalls and Berrys. Though no direct connection has yet been made with the Gastrell family, John showed me a letter from Ken Herbert referring to a brass plate which is kept at the Church of Saint Leonard in Upton. It reads:

This plate is inscribed to keep the memory of James Gastrell, late of the City of Gloucester, baker, the son of Richard Gastrell, of this Parish, Gent, by Sarah, his wife. He departed this life 30th day of March 1793 aged 51.



The House, which is listed with the barn and cider house, as an agricultural grouping, is of the late 18th century, but there is

evidence of an earlier dwelling, part of which was incorporated as can be seen from the stonework.

Treasures revealed over time include inglenook fireplaces, a bread oven, cider mill stone wheels, king post trusses, agricultural implements and a silver shilling dated 1561 found in the veg plot in 1986. The large beam over the chimney breast of the main fireplace bears some marks called



apotropaic symbols which were inscribed in such places from medieval times to ward off evil spirits and witches.

The red well, which appears by the gateway into Gastrell's farm, was at one time the main source of water into the house.

The barn is thought to be 100 years older than the house. Its timber construction and gabled stone ends make it a very impressive building.



It is thought that the farm came into the Prinknash estate around 1824.

John Watts retired in 2001 and amongst his many interests he is now devoting time to research at the Gloucester Archive into the history of these wonderful buildings, and their occupants. When asked if there had been any ghostly encounters, John smiled, saying 'Don't all old buildings have their peculiar noises?'

I would like to thank John and Jennifer for allowing me into their home and for a very informative couple of hours.

MICHAEL TUCK
Your LOCAL ESTATE AGENT

SOLD IT!

FREE VALUATIONS CARRIED OUT WITHIN 24 HRS IF REQUIRED

01 452 612020
www.michaeltuck.co.uk

MIKE PRAWL
PLUMBING & HEATING

Tel/Fax 01452 547166
Mobile 07946 685419

ALL PLUMBING AND GAS WORK

- Landlords gas safety checks
- Energy efficient boilers installed
- Boiler breakdowns
- Boiler servicing
- Gas fire servicing
- Cookers installed
- General plumbing
- Free quotations
- Over 20 years experience

GAS SAFE REGISTER

City & Guilds

B.A. Electrical Services

Domestic & Commercial
Insured & Registered
For all your Electrical Needs
A Professional and Friendly
Service

Quality Work at Competitive Prices
For a Free Estimate call Bernie
01452 790872 / 07881 981352

Focus on local businesses ...

This month - HILL FARM HOLIDAY COTTAGES

“When new customers arrive many of them at first stop outside and enthuse over the view”, so Margaret McLellan, who owns the business, told me. “I wish we could get a good photograph of that view into our advertisements - it would be our best selling point.”

Photographs of views are almost never like the real thing. Hill Farm and its holiday cottages are a few hundred yards up the Painswick Road from the King’s Head, and the views are stunning, from Cleeve Hill and Cheltenham to the north, past the Malverns, May Hill, the Forest of Dean and over Gloucester and Robinswood Hill.

Margaret and her family moved to Hill Farm 28 years ago. The previous owners had just built the extra holiday cottages, and Margaret felt she’d like to take the business on. Before living at Hill Farm, she lived near Severn Springs, and before that, to the north of Cheltenham.



Running the cottages is hard work. Continual investment is needed to keep the places up-to-date and looking good. She has recently had the double glazing replaced, new carpets and new beds. Margaret has

an “amazing” cleaner to help her, but though she is well over retirement age, she still does the laundry herself.

What sort of customers does she have? “Very mixed. Holiday makers, business people working temporarily in the area, people looking to buy a house in the area, waiting for the right property to become available. Long term lets and just a week or a few days.”



At the moment she has two cottages. There was a third, pictured above, the very pretty old stone building across the driveway from the big house, which was a shed for tractors and farm implements. You can still see the beams that held the roof above the bays, but the openings are now filled in with stone. This building is currently being used by the family.

Andy Russell

GET INVOLVED GET INVOLVED GET INVOLVED GET INVOLVED GET INVOLVED GET INVOLVED GET INVOLVED GET INVOLVED GET INVOLVED GET INVOLVED

Lots of things to do!

It’s a new term, just the time to take up, or take up again, that activity you have been meaning to do for a while. The diary on the next page shows when. Here are many of the contacts. What else are you waiting for? Just do it!

Abbeydale Gardening
ClubMaggie Theakston
Badminton.....Tony Sharp
Brownies.....Beth Gill
Cricket Club.....Andy Russell
Fitness Classes.....Deborah Locke
Football.....Jeff Willerton
Get Together Club.....Pam Tickner
History Group.....Mike Stratford
Little Mouslings.....Beth Gill
Needles & Pins.....Lesley Greysmark

Pavilion Painters.....Jill Fleming
Petanque.....Eric Ashforth
Pilates.....Robert Sharpe
Probus Ladies.....Pam Tickner
Probus Tuesday.....Brian Clarke
Probus Wednesday....Jeremy Dancey
Upstagers.....Ann Pearson
USCAN Footpaths group...Andy Russell
USCAN 2nd Wednesdays..Carol Evans
Yoga (Pavilion).....Sylvia Bennett
Zumba.....Regina Spence

This list is incomplete of course. Our records of contact names and numbers are not as good as we’d like. We’d really like to be able to publish a bigger list, with accurate entries. We believe one of our most important jobs is to let people know what is on in the Village and who to contact to get involved. So if your group or activity is not showing, or if the detail here is incorrect, please let our clubs/societies/organisations contact Catherine McLean know.

We have put as much in here as space permits.
 Events happening weekly are only shown for
 the first month or so

VILLAGE DIARY

SEPTEMBER

1	Tue	Tuesday Probus.....	B. M. I.....	10.00a.m.
1	Tue	Badminton	Village Hall.....	8.30-10.30p.m.
2	Wed	Pilates.....	Pavilion	9.30-10.30a.m.
2	Wed	Stitchers	Pavilion.....	10.30-12.30p.m.
2	Wed	Pavilion Painters	Pavilion	2.00-4.00p.m.
2	Wed	Bingo	B. M. I.....	8.00p.m.
2	Wed	Upstagers Amateur Dramatics.....	Village Hall.....	7.30-9.30p.m.
2	Wed	Tai Chi	Village Hall Annex	8.00-9.30p.m.
3	Thu	Senior Circuits	Pavilion	9.30-10.15a.m.
3	Thu	Tai Chi.....	Village Hall Annex	9.30-10.30a.m.
3	Thu	Zumba.....	Village Hall.....	7.30-8.30p.m.
4	Fri	Yoga.....	Pavilion.....	1.15-2.45p.m.
7	Mon	Yoga.....	Village Hall Annex.....	10.00-11.30a.m.
7	Mon	Fitness Training (2 sessions).....	Village Hall Annex.....	6.00-7.30p.m.
7	Mon	Upton WI.....	Village Hall.....	7.30-10.00p.m.
7	Mon	Parish Council Meeting.....	Pavilion.....	7.30p.m.
8	Tue	Badminton.....	Village Hall.....	8.30-10.30p.m.
9	Wed	Pilates.....	Pavilion.....	9.30-10.30a.m.
9	Wed	Second Wednesdays.....	Village Green.....	9.30a.m.
9	Wed	Stitchers.....	Pavilion.....	10.30-12.30p.m.
9	Wed	Wednesday Probus.....	B. M. I.....	10.00a.m.
9	Wed	Pavilion Painters.....	Pavilion.....	2.00-4.00p.m.
9	Wed	Bingo.....	B. M. I.....	8.00p.m.
9	Wed	Upstagers Amateur Dramatics.....	Village Hall.....	7.30-9.30p.m.
9	Wed	Tai Chi.....	Village Hall Annex.....	8.00-9.30p.m.
10	Thu	Senior Circuits.....	Pavilion.....	9.30-10.15a.m.
10	Thu	Tai Chi.....	Village Hall Annex.....	9.30-10.30a.m.
10	Thu	Zumba.....	Village Hall.....	7.30-8.30p.m.
11	Fri	Yoga.....	Pavilion.....	1.15-2.45p.m.
12	Sat	Upton St Leonards Flower Show.....	Village Hall.....	2.00-5.00p.m.
14	Mon	Yoga.....	Village Hall Annex.....	10.00-11.30a.m.
14	Mon	Fitness Training (2 separate sessions).....	Village Hall Annex.....	6.00-7.30p.m.
14	Mon	Twyver WI.....	Village Hall.....	7.30-10.00p.m.
15	Tue	Needles & Pins.....	Pavilion.....	9.30-12.00p.m.
15	Tue	Tuesday Probus.....	B. M. I.....	10.00a.m.
15	Tue	Badminton.....	Village Hall.....	8.30-10.30p.m.
16	Wed	Pilates.....	Pavilion.....	9.30-10.30a.m.
16	Wed	Ladies Probus.....	B. M. I.....	10.15a.m.
16	Wed	Stitchers.....	Pavilion.....	10.30-12.30p.m.
16	Wed	Pavilion Painters.....	Pavilion.....	2.00-4.00p.m.
16	Wed	Bingo.....	B. M. I.....	8.00p.m.
16	Wed	Upstagers Amateur Dramatics.....	Village Hall.....	7.30-9.30p.m.
16	Wed	Tai Chi.....	Village Hall Annex.....	8.00-9.30p.m.
17	Thu	Senior Circuits.....	Pavilion.....	9.30-10.15a.m.
17	Thu	Tai Chi.....	Village Hall Annex.....	9.30-10.30a.m.
17	Thu	History Group - Roman Gloucester.....	Village Hall.....	7.30-9.00p.m.
18	Fri	Yoga.....	Pavilion.....	1.15-2.45p.m.
21	Mon	Yoga.....	Village Hall Annex.....	10.00-11.30a.m.
21	Mon	Fitness Training (2 separate sessions).....	Village Hall Annex.....	6.00-7.30p.m.
21	Mon	Abbeyle Garden Club.....	Village Hall.....	7.30-9.30p.m.
22	Tue	Needles & Pins.....	Pavilion.....	9.30-12.00p.m.
22	Tue	Badminton.....	Village Hall.....	8.30-10.30p.m.
23	Wed	Pilates.....	Pavilion.....	9.30-10.30a.m.
23	Wed	Stitchers.....	Pavilion.....	10.30-12.30p.m.
23	Wed	Wednesday Probus.....	B. M. I.....	10.00a.m.
23	Wed	Pavilion Painters.....	Pavilion.....	2.00-4.00p.m.
23	Wed	Bingo.....	B. M. I.....	8.00p.m.
23	Wed	Upstagers Amateur Dramatics.....	Village Hall.....	7.30-9.30p.m.
23	Wed	Tai Chi.....	Village Hall Annex.....	8.00-9.30p.m.
24	Thu	Senior Circuits.....	Pavilion.....	9.30-10.15a.m.
24	Thu	Tai Chi.....	Village Hall Annex.....	9.30-10.30a.m.
24	Thu	Get Together Club.....	Village Hall.....	2.30-4.30p.m.
24	Thu	Zumba.....	Village Hall.....	7.30-8.30p.m.
25	Fri	Yoga.....	Pavilion.....	1.15-2.45p.m.
26	Sat	USCAN walk - The Moat & Gloucester Services.....	Pavilion.....	10a.m. start
28	Mon	Yoga.....	Village Hall Annex.....	10.00-11.30a.m.
28	Mon	Fitness Training (2 separate sessions).....	Village Hall Annex.....	6.00-7.30p.m.
28	Mon	Camera Club.....	Village Hall.....	7.00-9.00p.m.
28	Mon	Lady Downe Charity Trustees meeting		
29	Tue	Needles & Pins.....	Pavilion.....	9.30-12.00p.m.



29	Tue	Badminton.....	Village Hall.....	8.30-10.30p.m.
30	Wed	Pilates.....	Pavilion.....	9.30-10.30a.m.
30	Wed	Stitchers.....	Pavilion.....	10.30-12.30p.m.
30	Wed	Pavilion Painters.....	Pavilion.....	2.00-4.00p.m.
30	Wed	Bingo.....	B.M.I.....	8.00p.m.
30	Wed	Upstagers Amateur Dramatics.....	Village Hall.....	7.30-9.30p.m.

Regular weekly events not listed below this line

OCTOBER

5	Mon	Upton WI.....	Village Hall.....	7.30-10.00p.m.
5	Mon	Parish Council Meeting.....	Pavilion.....	7.30p.m.
10	Sat	Copy Date for November issue of USL Life		
12	Mon	Twyver WI.....	Village Hall.....	7.30-10.00p.m.
14	Wed	Second Wednesdays.....	Village Green.....	9.30a.m.
19	Mon	Abbeyle Garden Club.....	Village Hall.....	7.30-9.30p.m.
26	Mon	Camera Club.....	Village Hall.....	7.00-9.00p.m.
28	Wed	Ladies Probus (details to be advised)		
29	Thu	Get Together Club - Pie and Peas.....	Village Hall.....	1.00p.m.

NOVEMBER

2	Mon	Upton WI.....	Village Hall.....	7.30-10.00p.m.
2	Mon	Parish Council Meeting.....	Pavilion.....	7.30p.m.
5	Thu	Bonfire Night.....	Village Hall.....	Time tba
7	Sat	Autumn Quiz.....	B.M.I.....	8.00p.m.
9	Mon	Twyver WI.....	Village Hall.....	7.30-10.00p.m.
10	Tue	Copy Date for December issue of USL Life		
11	Wed	Second Wednesdays.....	Village Green.....	9.30a.m.
14	Sat	Entertainment Night.....	B.M.I.....	8.00p.m.
16	Mon	Abbeyle Garden Club.....	Village Hall.....	7.30-9.30p.m.
23	Mon	Camera Club.....	Village Hall.....	7.00-9.00p.m.
23	Mon	Lady Downe Charity		
25	Wed	Ladies Probus	B.M.I.....	10.15a.m.
26	Thu	Get Together Club	Village Hall.....	2.00p.m.

To get your event included in the diary, contact Paula Quinn

We need more adverts!

Financially this newsletter is just about breaking even. That means we aren't yet close to making the profits we had hoped for, money that we'd be ploughing back into the community and to support the Church, whose monthly magazine we 'took over'.

So do you know a local business that would benefit from advertising with us? This newsletter is read by more or less every resident in the Village and plenty of others who live nearby, something like 2000 people, we reckon. And it is read, not just thrown in the bin as soon as it arrives.



Roger Brown
 Painter and Decorator
 Free Quotations
 Telephone 01452 617750
 Mobile 07786 765722
 7 Twyver Close
 Upton St Leonards



ANDREW BIRD
 HEARING LIMITED

Book your **FREE HEARING TEST**
 At one of our many centres throughout Gloucestershire.
01242 262551

The Latest Digital Technology
 90 Day money back guarantee
 No cancellation fees
 FREE aftercare for the life of your aids
 FREE home visits
 FREE repair estimates
 LOW COST batteries

We also welcome existing hearing aid users who are dissatisfied with their current service & are looking for a local company.

TURN TO US FOR HELP AND SUPPORT

In your time of need we'll take care of all the funeral arrangements.
 Call us 24 hours a day.

- Funeral Pre-payment Plan
- Memorials

SELIM SMITH & CO
FUNERAL DIRECTORS

HERON LODGE, PAINSWICK ROAD
GLOUCESTER GL4 4QJ
01452 502685



Part of Dignity plc. A British Company

What's a Forest School?

Beth Gill, Chair of the School Governors explains:

Upton St Leonards C of E Primary School will be introducing a "Forest School" to the curriculum from this term.

Forest Schools offer a unique educational experience using the outdoor, woodland environment as a classroom. Forest Schools have demonstrated success with children giving them the opportunity to learn about the natural environment, how to handle risks and most importantly to use their own initiative to solve problems and co-operate with others. Children play, learn boundaries of behaviour, both physical and social, establish and grow in confidence, self-esteem and become self-motivated. It is also proven to provide learning opportunities for children who typically do not do as well in the classroom.



The evaluation suggests Forest Schools make a difference in the following ways:

- Confidence: children have the freedom, time and space to learn and demonstrate independence
- Social skills: children gain increased awareness of the consequences of their actions on peers through team activities such as sharing tools and participating in play
- Communication: language development is prompted by the children's sensory experiences
- Motivation: the woodland tends to fascinate the children and they develop a keenness to participate and the ability to concentrate over longer periods of time
- Physical skills: these improvements are characterised by the development of physical stamina and gross and fine motor skills
- Knowledge and understanding: the children develop an interest in the natural surroundings and respect for the environment

It will take some time for the school to develop the woodland area, and we are very sympathetic to the views of any local residents. Once the sessions have been running for a while, we would like to invite local residents to come in and experience our new teaching area for themselves. If anyone has any questions regarding the Forest School initiative, please contact the school on 616109.

Village Day 2016

The date for next year's Village Day will be 11th June. It is also the Queens Official 90th Birthday. That gives us something of a theme, and incentive to make it better still!

Please support us in making this a most memorable occasion.

We will need lots more help on the day so please put your name forward to either Carol Evans or Keith Pearson.

LAWNMOWERS

SERVICED - SHARPENED - REPAIRED

ALSO: RIDE-ON MOWERS, CHAINSAWS,
ROTAVATORS, STRIMMERS, HEDGE
TRIMMERS ETC.

FREE LOCAL COLLECTION & DELIVERY
CHELTENHAM MOWERS LTD

01452 616169

Unit B3, Nexus, Hurricane Road, GL3 4AG

Visit and buy on-line

www.mowers-online.co.uk

**Tania Walters
Estate Agents**

Fees from 1% plus VAT.

Give us a try

USL Office 01452 616131

Quedgeley Office 01452 722022

sales@taniawaltersestateagent.co.uk

PHELPS ELECTRICAL SERVICES

Established over 25 years.

Free estimates. No job too small.
No call out charge. Rewiring. Additional
sockets. Security lighting. New phone
points. All general electrical work.

Tel: Robert on 01452 611127

Mobile: 07752 033447



PART P
Electrical Safety

NICEIC
DOMESTIC
INSTALLER

SENIOR CIRCUITS

Thursdays at USL Pavilion 9.30-10.15 and
Innsworth Community Centre 11.30-12.15
Cost £4.50

Benefits of exercise:

Healthy joints
Reduce blood pressure
Improve balance and
co-ordination
Increase energy levels
Improve sleep
Have fun!

Deb Locke PT
07738 104404

DebLockePT@mail.com



Have you (or your kids or grandkids) been on the Scrumpty trail yet?

This seems to have caught on in a big way in Gloucester as part of the build-up to the Rugby World Cup. Get your trail guide from the Information Centre in Southgate Street or download it from the web site: scrumptytrail.com

The scrumpty on the left is the work of Upton St Leonards Primary School. Where can you see him? You'll have to do the trail to find out!



UPTON ST LEONARDS LIFE

Web site: <http://usllife.co.uk/>

To contact us, use the website above or the postbox by the Village Hall main door, or use the contact details that appear below:

This month's editor: Andy Russell
 Editors: Andrea Dawson
 Andy Russell
 Peter Wilson
 Company Secretary: Cliff Alderman
 Treasurer: Ian Crowe
 Feature writers: Kaye Redman
 Christina Caldwell
 Teresa Clarke
 Linda Munnoch

Clubs / Societies / Organisations: Catherine McLean

Diary: Paula Quinn

Advertising: Contact: Andy Russell

Admin Support: Janine Black

Distribution: Jenny Cunningham

Photography: Jim Browne

Proof Readers: Carol Hardacre
 Christine Ellson
 Kate Davies

USL Life is published by USL Life CIC, a Limited Company, and is printed at Leyhill Prison.



David Cridland Contracting

Fencing, Ground maintenance and groundwork contractor

3 Ton mini-digger with driver available

All types of fencing supplied and erected. Hedges cut. Trees pruned. Ground cleared.

From small gardens to farms, no job too small.

Service and reliability guaranteed

Fully insured 20 years experience

01452 311215 or 07836 279974
 COMMELINES MILL FARM
 UPTON ST LEONARDS GL4 8EG

GLOUCESTER COMPUTER SPECIALIST



Troubleshooting
 Computer Virus Problems
 Desktop and Laptop First Aid
 Broadband and Wireless Setup
 Hardware and Software Updates
 Home and Business Network Setup

NO CALLOUT FEE

Only time spent on site is charged for (Subject to a 30 minute minimum charge)

Working in the IT Industry since 1983
 t:08456 803 805 m:07780 664 516
 e:support@gotogcs.co.uk
 w:www.gotogcs.co.uk
 10% Senior Citizen Discount with this advert



John Weygang OPTOMETRISTS LLP

Your local practitioner, providing the highest quality eye care, including FREE NHS Eye Tests, specialised products and services for you and your entire Family

Please contact our Churchdown practice if you would like to arrange a Home visit



LOCATIONS : ABBEYMEAD 01452 306807
 CHURCHDOWN 01452 855484 | GLOUCESTER 01452 522118
 HUCCLECOTE 01452 619100 | QUEDGELEY 01452 721108
www.weygang.co.uk