

# Upton St Leonards Life incorporating Church News

Issue 57

May 2019



**Showcasing USL Beavers  
'Make a Paper Plate Face'  
from the Spring Show.**



See page 3 for the



Spring Show Winners

See page 5 and beyond  
for extended coverage on  
what has been  
happening in our village  
via

The Parish Council  
Report for 2018/2019

See page 15 for



Dragon Boat details

# Letters to the Editor

## Responsible Dog Ownership

**"IT'S OKAY! MY DOG IS FRIENDLY"**  
**NO! NO! IT'S NOT OKAY!**

Just because your dog is friendly does not mean other dogs are. Some may be nervous, reactive, fearful, in training, or owned by people who want to be left alone.

NEVER LET YOUR DOG RUN UP TO ANOTHER DOG

**RESPECT OTHERS & THEIR NEED FOR SPACE**

IF YOU HAVE NO VOICE CONTROL OVER YOUR DOG  
 KEEP THEM ON A LEASH

Dogwalkeressentials.com



In the light of the recent tragedy in Cornwall, where a 9 year old boy lost his life, after being attacked by a dog, it is timely to reflect and consider how much control we are actually able to exercise over our own dogs.

We would respectfully ask all owners to consider their dogs' behaviour in public places around the village and especially in the recreation ground, which is not specifically a designated dog zone, unlike the Glebe field. Many youth groups gather to play football, cricket and other outdoor games in the recreation area and we all need to be able to use this outdoor space safely, without fear of being approached by a dog that is out of control. We should be mindful that by allowing them to run free, that we can cause distress to others using the area.

Equally as important, we should not assume that all dogs want to be petted. There are a considerable number of 'rescue' dogs now living in good homes but dogs can be fearful too and when they feel threatened, like humans, they can be unpredictable.

*Concerned resident and dog owner*

## A Pleasant Surprise

The other day a lady called, came knocking at my door  
 'I'm glad we've finally met', she said, 'I've only heard of you before'  
 She had typed out all my poems and had them in a folder  
 It's not a chore, but I must write some more,  
 Before the year gets older.

The Pirates of the Twyver and The Spotted Orchid were two that I have written  
 And others that have gone before, if she read them, she'd be smitten.  
 She handed me the folder and said, 'I'm glad that we have met'  
 I said, 'There's more that's in my store. You ain't seen nothing yet!!'

*Ted Gardner*



Gloucester 01452 508800  
 Cirencester 01285 654875  
 www.daveylaw.co.uk

**DAVEY LAW**  
 Solicitors

- Residential Property
- Wills & Probate
- Lasting Power of Attorney
- Family & Divorce
- Commercial Property
- Employment Law
- Dispute Resolution
- Personal Injury
- Clinical Negligence

FOR YOU  
 YOUR FAMILY  
 YOUR BUSINESS

9 Pullman Court  
 Great Western Road  
 Gloucester GL1 3ND

Contact us today:  
**01452 508800**  
 enquiries@daveylaw.co.uk

**Hill Farm Cottages**  
 Upton Hill, Upton St Leonards, GL4 8DA

Self-catering cottages well furnished and equipped with the comforts that will make a stay in the Cotswolds one to remember fondly. Each cottage has full central heating and a colour television in the lounge. Towels, tea towels and attractive bed-linen are all provided for you; all you need to bring is food.

**01452 614081**  
 hillfarmcottages@hotmail.co.uk

*Roger Brown*

*Painter and Decorator*  
*Free Quotations*

*Telephone 01453 454724*  
*Mobile 07554 637175*

# What's been happening in Upton?

## 46th Upton St Leonards Spring Show

30<sup>th</sup> March 2019

A very special **THANK YOU** to the Judges, everyone who entered exhibits, the ladies who served the refreshments, people who donated cakes and raffle prizes and everybody who visited the show in the afternoon this year.

The donations of the charity items were very much appreciated.

It was also good to have all of the Uniform groups, Chipmunks Nursery, USL Playgroup and the Infant school children who take part and get involved with their colourful exhibits, which definitely brightened up the halls.

We were pleased to have Rev Clodagh Ingram award the trophies to this year's winners, who were;



|                                  |                         |
|----------------------------------|-------------------------|
| <b>Photography, Best in show</b> | <b>Lisa Payne</b>       |
| <b>Home Produce</b>              | <b>Julie Winstanley</b> |
| <b>Flowers</b>                   | <b>Lee Blackshaw</b>    |
| <b>Handicrafts</b>               | <b>Marian Croose</b>    |
| <b>Children's</b>                | <b>Ethan Payne</b>      |



It was a lovely atmosphere and great to see so many people enjoying this event and making use of the different Craft stalls that joined us too. Thank you for the support and use of the Parish Council Website, the USL Life Newsletter for featuring and advertising the show and our local Post Office.



**John Weygang**  
OPTOMETRISTS LLP

Your local practitioner, providing the highest quality eye care, including **FREE NHS Eye Tests**, specialised products and services for you and your entire Family

Please contact our Churchdown practice if you would like to arrange a Home visit



**LOCATIONS :** ABBEYMEAD 01452 306807  
CHURCHDOWN 01452 855484 | GLOUCESTER 01452 522118  
HUCCLECOTE 01452 619100 | QUEDGELEY 01452 721108  
[www.weygang.co.uk](http://www.weygang.co.uk)

**Rhys James Fencing**

All types of fencing and gates supplied & fitted. From minor repairs to complete new fence, I offer a fast & friendly service.

Local contractor, fully insured, established over 20 years.

Garden work undertaken. Trees removed, stumps ground, hedges cut. All waste responsibly disposed of.

The Lodge  
Rance Pitch  
Upton St  
Leonards

07931 380463 / 01452 372051  
[rhysjames64@outlook.com](mailto:rhysjames64@outlook.com)  
and on  **facebook**

Approved Contractor to Local social housing Association and the Diocese of Gloucester



**J.B. RD**  
**CHIMNEY SWEEP**

Traditional and Power Chimney Sweeping from £40

Open Fires, Boilers, Cookers and Stoves Serviced  
Chimney Pots, Cowls and Bird Guards Fitted  
Flue Liners and Stoves Installed to Latest Regulations  
Cctv Chimney Camera Surveys

PHONE ME TODAY FOR AN APPOINTMENT

**01452 521732**  
**07973 905151**  
[sootybloke@blueyonder.co.uk](mailto:sootybloke@blueyonder.co.uk)



# What's been happening in Upton?



## TWYVER WI – APRIL REPORT

The GWFI is about to conduct a mass environment lobby entitled 'The Time is Now' on Climate Change. This will take place at Westminster on 26<sup>th</sup> June. If sufficient members are interested in attending, then coach travel will be arranged. For further information please contact Sandie Baker, 01452 411541.

Members were asked to put their names forward if interested in joining the WI Federation choir. The choir will meet for two hours weekly from September to December in order to prepare for the Christmas Concert in Cheltenham Town Hall.

A Bite to Eat, a midweek walk with lunch, a Beaded Butterfly scissor case workshop, a Bowls taster, a talk on FGM and a New Speakers Taster morning were just some of the events forthcoming over the next few months. A flyer advertising the Open Gardens at Hanley Swan, near Malvern from 4<sup>th</sup> - 6<sup>th</sup> May, was also in circulation.

Our speaker for the evening was Christina Snell, a Community Celebrant. Christina has been a Civil celebrant for four years and works for herself. She

explained to us how the idea originally came from a Lionel Murphy in Australia in the early 1970's, but it took a while before it gained momentum in the UK. As people realise they can have greater control over their marriages, christenings and funerals, the use of celebrants is growing.

Christina emphasised the bespoke possibilities when using a celebrant that may not always be possible in a more traditional setting. 'Ceremonies are about marking celebrations, making the ordinary special'. She did however, also make us aware that celebrants can't legally marry couples in the UK. To be legally valid, a UK marriage ceremony must be performed by an authorised person (for example, a registrar, a vicar or a priest) and be witnessed by two people.

Christina's talk elicited a great number of questions and a lively discussion ensued. The vote of thanks was given by Ann Wilson.

Our next meeting will take place on 13<sup>th</sup> May when we will have an Evening of Singing: Light Opera & Modern Musicals, courtesy of Carole and Malcolm Brown. All are welcome.

**Andrea Dawson**

## UPTON ST LEONARDS WI – APRIL REPORT

President Lynne welcomed everyone including Janet our visitor. All ladies had enjoyed their lunch at the Rose Tree Farm and we next meet at The Wagon and Horses on April 25<sup>th</sup>. Kathy read her report from the GFWI Annual Council Meeting. We are looking forward to our trip to SS Gt Britain in July and to Kew Gardens in May. A reminder also of our Ukulele evening in October and our lunch at Highgrove in December was given out.

Intrigues into the life in the Tudor Court played out by Katherine Parr, the last wife of Henry VIII was the subject of our speaker, Mike Bottomley. Mike acted out his part dressed as Miles Coverdale, a monk who helped complete the Bible after the first translation by William

Tyndale. Katherine was a religious reformer, well educated and was the first published lady author. Her emblem was a Tudor rose with a crown and her motto "to be useful in all I do". This spiritual lady inspired our speaker and a warm round of applause followed a vote of thanks from Marlene.

Judy's workshop was well attended and enjoyed in good spirits on a dull dark wet afternoon. We welcomed three Twyver ladies and we all managed to achieve a colourful table hand sewn bowl.

We next meet on Monday 6<sup>th</sup> May when our speaker will be Peter McNeil. His talk is entitled "Tales of the Turf". All ladies are very welcome

**Kathy Quant**

## *Upton St Leonards Life AGM*

It was good to see the AGM well attended. Minutes were read and approved by the members and the various reports reviewed with points being noted for further action.

The team are currently looking for a Sales person to promote the newsletter to future advertisers. If you would be interested in such a role, please contact Andy Russell.



# What's been happening in Upton?

## Upton St Leonards Parish Council Annual Report 2018/19

### Chairman's Report: Cllr Keith Pearson

I think I must have missed 2018, where did it go? Thanks once again to all those serving on your Parish Council for their hard work and efforts during the last 12 months. We continue to work for the best interest of the residents of Upton at all times. Now that some time has elapsed it is apparent, even after the motorway resurfacing has settled down, that the excessive noise is still a major concern for us. We are constantly meeting with Highways England and our MP's and have



indeed set up a small group which includes several residents to try to get some resolution on getting improved noise barriers and the installation of some new ones where they don't exist. Work continues. The adult fitness features are now in situ on the recreation ground at the time of writing. Sadly we have had a setback with County Highways regarding the 20mph Zone for the village but we are working hard to resolve it. Hopefully you are all aware that we planted a permanent Christmas tree on the green that will be lit up annually. Committee Chairs will report further on their activities below.

Our Village Hall and Church have benefited from a very generous legacy from the estate of the late Monica Sims, the very well known BBC executive who lived in Upton in earlier years, for which we are extremely grateful. It will be used to good effect I am sure.

I have once again enjoyed the privilege of chairing an excellent Parish Council, which continues to have the services of a very efficient Clerk. Thanks again to all.

### Planning Report: Cllr Chrissie Castle

Formal applications for planning in the village this year were 29 compared to 32 last year. Most were applications for extensions/modifications to homes and 4 applications for new builds.

Three of the applications for new dwellings were by Stroud District Council (SDC) on land owned by them in Woodland Green and Ash Grove. These areas over the years had become used for parking and one site had once had garages on site. It is unfortunate that SDC did not see fit to consult with local residents prior to their application to build in these areas. There was concern shown by residents and the parish council, regarding the loss of these parking spaces and the congestion it could cause for the bus route. The Parish Council (PC) has offered the use of some land (owned by the Parish) adjacent to one of the sites, as an area for extra parking for approximately 6 cars. To this end they are negotiating for funding from SDC to help towards the costs. Our parish was not the only one to be caught out by the sale of council land and many other plots were also given permission throughout the district as the SDC tries to raise extra funding.

We still have no update for the development of the land at



Bowden Hall Farm sold to Dawn Homes and we have no information as to when building is likely to start. Outline planning has been permitted but reserved matters are still under consideration. We are conscious of the number of requests to build in the surrounding areas of the village and are determined to try and preserve the

AONB surrounding our village.

On 7 January Conrad Moore was invited to brief the PC on the SDC Local Plan Review and the Emerging Strategy Consultation which is currently taking place. This is looking at future planning strategy to cover the period 2020-2040. The PC is strongly supportive of retaining a tightly drawn settlement boundary and restricting further development to occasional infill within the defined settlement. For residents interested in following the consultation process and wishing to find out more visit: [www.stroud.gov.uk/localplanreview](http://www.stroud.gov.uk/localplanreview). The final draft plan consultation will take place Autumn 2019.

At the time of writing this report there is a recent application for a 74 room hotel at the Southbound service station on the M5. The PC, in principle, did not object but did have concerns and has raised the issue regarding access arrangements, in particular the need for a foot path on an unlit road, especially for staff who often walk to the site.

**LAWNMOWERS**  
SERVICED - SHARPENED - REPAIRED  
*ALSO: RIDE-ON MOWERS, CHAINSAWS, ROTAVATORS, TRIMMERS, HEDGE TRIMMERS ETC.*  
COLLECTION & DELIVERY AVAILABLE  
**CHELTENHAM MOWERS LTD**  
01452 616169  
Unit B3, Nexus, Hurricane Road,  
Gloucester Business Park, GL3 4AG  
Visit and buy on-line [www.mowers-online.co.uk](http://www.mowers-online.co.uk)

**Computer playing up?**

- Virus, Spyware, Malware removal
- Slow Computer
- Printer setup or fault
- Internet or wi-fi problem
- Data Recovery and Data Transfer service
- Software fault diagnosis
- Computer Tuition
- Computer Health Check
- FREE telephone support for minor problems

**Call Churchdown Computers**  
t: Mark on 01452 534668 or 07557 483438  
e: [mark@churchdowncomputers.co.uk](mailto:mark@churchdowncomputers.co.uk)  
w: [www.churchdowncomputers.co.uk](http://www.churchdowncomputers.co.uk)

**CHORLEY'S**  
GLOUCESTERSHIRE'S FINE ART AUCTIONEERS  
Free auction valuations  
Regular fine art & antiques sales  
Insurance & probate valuations  
01452 344499  
[enquiries@chorleys.com](mailto:enquiries@chorleys.com)  
**www.chorleys.com**  
PRINKNASH ABBEY PARK GL4 8EU

# What's been happening in Upton?

## Planning Report: Cllr Chrissie Castle cont'd

As a reminder, planning meetings are held on the first Monday of each month prior to the Parish Council

Meetings and the public are always welcome. For more information on planning applications you can register on the planning portal website and you will automatically be updated with any new applications.

## Environment Report: Cllr Peter Wilson

Many activities have continued as part of our efforts to maintain the excellent condition of our village.

The Parish Council is very grateful to the Footpath Team (village volunteers led by Andy Russell who work under the name of USCAN) for their continued support in maintaining all the footpaths within our Parish. The Parish Council provides funding to cover such things as their insurance and equipment.



Andy and his team have also carried out work in the Church grounds to keep them in good condition, helped keep Cud Hill (a common owned by the Parish) from being overgrown and organised litter picks to keep our village tidy.

Our Parish Clerk, Roy Balgobin, has ensured our Grass Cutting contract has been carried out successfully, led on any other maintenance such as tree pruning as required and liaised with our Water Warden (David Cridland) to ensure our Water Courses are free of blockages to prevent the risk of flooding.

We have had some success with the Village Improvements put forward by residents. In particular, we secured match funding for the Adult Gym initiative during late 2018 and many of you will be aware that the equipment has now been installed along with new fencing for the area. Our thanks to our County Councillor colleague, Keith Ripington, for his support during the funding application for County funds.



An area has also been created for a Young Children's Play area (up to 5 years old) and once the necessary funds have been secured, we will be progressing this work.



Our Parish Council Chairman, Keith Pearson is still actively pursuing the 20mph Zone for Upton and progress will be communicated through our USL Life newsletter.

In summary, my thanks go to everyone who has contributed to making Upton such a lovely place to live, including the efforts of my colleague David

Hunt who helps keep our Recreation Ground in such great condition.

## Recreation Report: Cllr David Hunt

The success of the Upton Football team in gaining promotion and doing so well in the higher league deserves our congratulations. However it brings with it the need to ensure that the playing surface is the best that can be achieved with the limited resources available. During wet spells early in the season, it became clear that the drainage improvements carried out some years ago were beginning to deteriorate. The heavy clay subsoil contributed to periods when the pitch was unplayable. As a consequence, the Parish Council undertook to flush out the main drain and to install new cross pitch drainage where needed. Club volunteers assisted with sanding and filling the numerous clay fissures. The result is a much improved playing surface. However, the heavy clay subsoil remains a problem in very wet conditions.



Another highlight of the year has been the recent installation of the adult exercise equipment on the Glebe Field. Four pieces of carefully selected 'machinery' should ensure that Upton's adults soon show a marked increase in fitness levels. Please come down and give it a try if you haven't already done so. (Just a reminder, however, the items are not suitable for children's use.) With the contractor on site, the opportunity was taken to re-fence the Play Area and to provide a small enclosure to accommodate infant play equipment (coming soon!).



The USCAN sponsored Jubilee Nature Walk has also had a makeover in recent months and a new gate now connects the walk directly with the Glebe Field. As a consequence a circular walk around the Glebe and Rec., via the Jubilee Walk is now a possibility. However the Parish Council is concerned that dog walkers comply with legislation and ensure that dogs are exercised off-lead only on the Glebe Field. If necessary, steps will be taken to enforce this simple guideline that is in place to provide a safe environment, in particular, for children enjoying our public recreation ground.



At the Pavilion, work will be undertaken shortly to replace all outside lighting with a more efficient eco-friendly system. Visitors will also note the extended paved area established at the front of the Pavilion, providing a much improved seating area for cricket watchers. Two new sponsored benches have also been installed.



# What's been happening in Upton?

## Recreation Report: Cllr David Hunt cont'd

Inside, Wi Fi is operational and a large projection screen is now in place.

With increasing use of the facilities, car parking can be difficult on occasions. However, recent marking out of spaces has improved the situation somewhat.

Finally, can I extend a sincere thank you to all the volunteers who contribute to the continued success of our Recreation Ground with a special mention for Richard Stephenson, our unofficial night 'watchman' and Andy Russell our Site Manager.

The Parish Council has taken ownership of the allotment shelter at the Perry Orchard site and has arranged for the patio to be relaid to enhance the area.

To all tenants, please be aware that the tenancy agreements will be sent out at the end of March. Please return them with the payment as soon as possible. This year you will be able to pay by BACS, should you prefer this method of payment.

All tenants: thank you for all the hard work you put in and I hope 2019 is a bountiful year. All your hard work shows in the way the two sites always look so good.

## Allotment Report: Cllr Hilary Morris



It has been another good year for the allotment sites in the village although there have been a few vacant plots which with the help of the site managers, we have tried to keep weed-free. There has been a recent interest in renting some of the vacant plots.

The two site managers Holly Paton who manages the Perry Orchard site and Peter Macey who manages the Stanley site, continue to keep both sites looking really good. They do the work quietly and efficiently, often without people realising the effort they have put in. The Parish Council thanks them for their efforts considering these are voluntary positions.

## Finance by Roy Balgobin Clerk / Responsible Finance Officer



The Accounts are now available for members of the Public to view them in the Parish Office on any Tuesday or Thursday between 9 am and 11 am or by prior appointment 01452 621688 and will be published on the Council website. [www.uptonstleonards-cp.gov.uk](http://www.uptonstleonards-cp.gov.uk) once the audit process is complete.

On behalf of the USL Life Team, we would all like to offer our thanks and appreciation for all the volunteer work that is carried out by our Parish Councillors.

**The Royal George, Birdlip**

Live Music every Friday night 9pm-11pm  
 Quiz Night every Wednesday 8.30pm  
 Tribute Nights - keep an eye out for some great artists throughout the year.

The Royal George presents  
**Fri 24 May 9pm-late**  
 ☆ **Tribute Night** ☆  
 Kayleigh is  
**Blondie and Cher**

01452 862506

## WANTED

### PATRICK OLIVER ANTIQUES

Furniture, clocks, silver, jewellery, books, watches, medals, toys, pens etc.

**COMPLETE HOUSE CLEARANCES**

4 Tivoli Street, Cheltenham, GL50 2UW

LAPADA member

Valuations for insurance, probate & dispersal

**Tel: 01242 519538 / Mob: 07970 052808**

## MICHAEL TUCK

Your LOCAL ESTATE AGENT

# SOLD IT!

FREE VALUATIONS CARRIED OUT WITHIN 24 HRS IF REQUIRED

**01452 612020**

[www.michaeltuck.co.uk](http://www.michaeltuck.co.uk)

# What's been happening in Upton?

## BMI Entertainment

On Saturday 30<sup>th</sup> March "Bitz & Splitz" entertained over 120 members and guests at the BMI. There was a fantastic atmosphere on the night and everyone had a good time.

The eight members of the band include two Upton residents who many will know, Gill and Emily Mew.

The proceeds on the night including a raffle and donation from a band member came to a total of £640. This amount has been added to the BMI charity for 2018-2019, CLIC and Prostate Cancer. This has boosted the amount to date to £1796.95.

## Abbeydale Garden Club - March and April

Our speaker for March was Pam Turner who with the help of some superb photographs described her own alpine garden. She pointed out that alpines can provide gardeners with a plant in flower for every month of the year.

Part of the appeal of these plants is that you don't even need a garden, as they can be grown in raised beds or containers. If you are really interested in these plants then a visit to the Alpine House at RHS Wisley is a must.

Our April meeting was very well attended with several new visitors appearing for the first time. Our speaker for April was Jon Mason, from Highfield Nursery. Jon entertained us well with his Spring Gardening Tips. He also brought along a wide selection of plants which he sold to members, giving them a generous discount. Further 20% discount cards were given out to everyone.

At our meeting on May 20<sup>th</sup> Chris Evans, from Dundry Nursery, pays a welcome return visit to talk about 'THE UNEXPECTED JOURNEY'.

Sue Yates, from Hucclecote Garden Club has arranged an annual trip on Friday, June 14<sup>th</sup> to The Bishops Palace and Gardens, Wells with a comfort stop en route at a Garden Centre. Cost £20. To date they have 13 seats left to fill and have opened the offer to Abbeydale Garden Club. Please contact, Chairperson, Anne Evans on 611868 for further details.

Our meetings are held in the Village Hall at 7.30 pm and both visitors and new members are welcome.

*Maureen Freshney*

## To London for Monica

About fifty family, friends and villagers filled a coach from Upton St Leonards to St James's Church, Paddington, to attend the service to give thanks for the life of Monica Sims. The eulogies were read by BBC's Jenny Abramsky, Sue MacGregor, Anna Home and Paul Fox in a very fitting and moving service at the church Monica attended when in London. There was a splendid buffet lunch, and a relaxed journey back. Many thanks to Meg and Barry James for organising the whole day!

We think Monica would be delighted to know we remembered her fittingly, learned a bit more about her achievements at the BBC, but also enjoyed ourselves. The picture shows us mingling after the service.







# St. Leonard's Church News

Website: [www.uptonstleonardschurch.co.uk](http://www.uptonstleonardschurch.co.uk)

**Priest in charge:** Rev. Clodagh Ingram  
**Curate:** Rev. James Turk



## *Rev Clodagh Ingram Writes*

Viktor Frankl was a Second World War survivor of Auschwitz concentration camp and he went on to become a pioneering psychotherapist. During his incarceration he noticed that some people survived much better than others in the camps. He noticed that it was not those who were physically stronger, more popular, more cunning, powerful, intelligent or just lucky. He noticed that it was those who had a sense of inner meaning or purpose; something to live for beyond themselves who survived better. Frankl noticed that people who had an inner sense of meaning or purpose could overcome even the most dreadful and dehumanising circumstances.

Viktor spent his life developing this theory which he called Logotherapy. Logotherapy is founded upon the belief that striving to find meaning in life is the primary, most powerful motivating and driving force in human beings.

I wonder what you think about these two statements taken from Frankl's writings:

'Life is never made unbearable by circumstances but only by lack of meaning and purpose.'

'Forces beyond your control can take away everything you possess except one thing, your freedom to choose how you will respond to the situation.'

According to Frankl finding meaning and purpose, finding the 'why?' for our life is of fundamental importance and helps us to survive through circumstances and challenges that would otherwise cause us to fade away.

I found my 'why' in life in my early thirties, one autumn evening as I attended an Alpha course. Looking back to that evening I had a sudden realisation that 'it's all about Jesus'. In the twenty years since that evening I have found faith, hope and meaning which has sustained me through the demands of raising a family, the death of both my parents, becoming a 'vicar' and living in a world that is hurting in so many ways. St Leonard's are holding an Alpha Course beginning on Wednesday 1<sup>st</sup> May at 7.30 in the hall at Upton St Leonard's Primary School. If you are looking for the 'why' in your life you are most welcome to join us. Come for the first evening, dip your toe in and see if you would like to join in with the rest of the course as we explore the Christian faith.

*Clodagh*



Saturday 8 June 7.30pm  
Just One with J John  
A Contemporary Worship Service

Just One is about local churches joining together to proclaim a message of hope. We warmly invite you to come and hear inspirational stories, praise and worship, a Gospel choir and a message from well known evangelist J John. One ticket admits two, so bring along someone interested in investigating the person at the centre of this message of hope - Jesus Christ.

Tickets £12 for two seats, available from the Welcome Desk, 01452 768928 or at [www.3choirs.org](http://www.3choirs.org) Doors open at 7.00pm. Refreshments available at the end of the evening

## *Tower Floodlighting*

The Tower Lights were lit on April 18<sup>th</sup> in remembrance of Dr Frank Hakim being the second anniversary of his death, a dear husband, father and grandfather. Kindly sponsored by his wife Margaret and the family.



*If you or your family would like to have the Church Tower Floodlights lit to celebrate a special event such as a birthday/anniversary/ Baptism or in remembrance of a loved one please contact Jenny Cunningham for more details. There is no set amount for this, just what you would like to gift to the Church in order to help cover running costs. If you are able to Gift Aid your donation this will help us too. Please note that the deadline of the Church Pages of USL Life is the 10th of the preceding month.*

# St. Leonard's Church News

Website: [www.uptonstleonardschurch.co.uk](http://www.uptonstleonardschurch.co.uk)

## Church Calendar for May 2019

|               |                 |                               |
|---------------|-----------------|-------------------------------|
| <b>Sun 5</b>  | <b>8.00 am</b>  | <b>Holy Communion service</b> |
|               | <b>10.00 am</b> | <b>Celebration Service</b>    |
| Mon 6         | 4.00 - 4.30     | Evening Prayer                |
| Tue 7         | 9.30 - 9.50     | Morning Prayer                |
|               | 9.50 -12.00     | Coffee & Chat                 |
| Wed 8         | 4.00 - 4.30     | Evening Prayer                |
| <b>Sun 12</b> | <b>10.00 am</b> | <b>Communion Service</b>      |
| Mon 13        | 4.00 - 4.30     | Evening Prayer                |
| Tue 14        | 9.30 - 9.50     | Morning Prayer                |
|               | 9.50 -12.00     | Coffee & Chat                 |
| Wed 15        | 4.00 - 4.30     | Evening Prayer                |
| <b>Sun 19</b> | <b>10.00 am</b> | <b>Communion</b>              |
| Mon 20        | 4.00 - 4.30     | Evening Prayer                |
| Tue 21        | 9.30 - 9.50     | Morning Prayer                |
|               | 9.50 -12.00     | Coffee & Chat                 |
| Wed 22        | 4.00 - 4.30     | Evening Prayer                |
| <b>Sun 26</b> | <b>10.00 am</b> | <b>Communion Service</b>      |
|               | <b>4.00 pm</b>  | <b>No Word &amp; Worship</b>  |
| Mon 27        | 4.00 - 4.30     | Evening Prayer                |
| Tue 28        | 9.30 - 9.50     | Morning Prayer                |
|               | 9.50 -12.00     | Coffee & Chat                 |
| Wed 29        | 4.00 - 4.30     | Evening Prayer                |

## Churchyard Tales

It has not gone unnoticed how much work has been going on in the churchyard from top to bottom due to the hard work of a band of volunteers. Branches have been pruned back, saplings felled and grass mowed.

We have been very touched and appreciate generous donations to the churchyard fund from Morrisons, Carol Baker and Michael Tuck specifically for the purchasing of plants and grass seed.

The work achieved can only be carried out by the willing and enthusiastic effort made from our volunteers no matter how small the job and many thanks to all those who are helping us.

*Sheila Thomas*



Photograph : Keith Robbins

During the unseasonably warm weather we experienced a few weeks ago the clay ground around the lamppost at the churchyard entrance dried out and the post began to lean. Trevor is seen here valiantly holding the post up whilst repairs were made.

## Report on Annual Parish Meeting & Annual Parochial Church Meeting 7<sup>th</sup> April 2019

The well attended Annual Meeting of Parishioners for the Election of Churchwardens was a mixed occasion – saddened by the retirement of Rachel Hall but uplifted by the re-election of Keith Robbins as Churchwarden for a further year. Thanks to Rachel and Keith! (see picture)

The APCM followed on with Reports from various elements of the Church's life in the preceding year. Finance. Andy Russell presented the annual accounts, already accepted by the PCC (and available to view on the internal church notice-board). Summary highlights were – the sale of Moorend Field had raised £96694 net of expenses and has been set aside by the PCC pending further fund-raising for the church roof repairs; the Parish Share had been paid in full; money raised from donations and special events was £18958 including £5230 from the Portway Farm Barn Dance (thanks to the Herring family), £1000 from Village Day, £1000 from Ecclesiastical Insurance, and £1000 from various small events.

Priest -in-Charge. Rev Ingram expressed her thanks for nearly two years as P-in-C to the very many people who have supported her in the Church's Ministry. She was grateful for support and encouragement in progressing her priorities - nurturing the church community to be outward facing and welcoming, ensuring the church building is fit for purpose, revitalising the Church Room as a building for Mission, building relationships in Coopers Edge, and supporting the schools both in Upton and in Coopers Edge.

Curate. Rev Turk was well into his second year of curacy. As well as the highlight of his ordination in July last year, his musical talents were evident playing at the Barn Dance and his enthusiasm for discipleship has been inspiring. He looks forward to another year with us. Other reports presented were: Safeguarding (no incidents), Electoral Roll update (71 on new Roll), Fabric (South Aisle wall repaired & windows cleaned, Insulating ducting installed – improved heating!!), Deanery Synod, Mothers Union, Open the Book, Foundation Governors. Reports can be read in full on

[www.uptonstleonardschurch.co.uk](http://www.uptonstleonardschurch.co.uk)

PCC Elections. Dorothy Cox having stood down, there are two vacancies for Deanery Synod Representative. PCC members re-elected for 3 years were David Knight (Lay Chair), Roy Roberts, Sheila Thomas. Still in term are Jenny Cunningham, Margaret Hakim, Sarah Kent (PCC Secretary). New members welcomed were Gill Howell and Dorothy Cox (formerly ex-officio); one vacancy remains.

*Roy Roberts*

**Mothers' UNION**

2.00 pm at St Leonard's Church  
Speaker to be confirmed  
May 16th 2019



*Alpha Course*

Wednesday May 1<sup>st</sup> to

Wednesday 26<sup>th</sup> June

7.30 pm - 9.00 pm

at

Upton St Leonard's Primary School

Alpha is a series of sessions exploring the Christian faith

Contact Rev Ingram if you are interested in coming along or if you would like more information



Keith Robbins, Rev Ingram, Rachel & Trevor Hall



Rev Ingram, Rachel Hall

Photographs : Roy Roberts

*Rachel Hall Writes*

I have been requested to write a few words about my duties as churchwarden over the past few years.

The churchwardens duties are to support the Priest in Charge, and to make sure that the church building and churchyard are kept in good order, thankfully we have very good teams of volunteers who take care of these.

The churchwardens ensure that church services are conducted properly and held regularly, we are fortunate that at the present time we have a very supportive vicar, Rev Clodagh Ingram and curate Rev James Turk therefore the duties of churchwarden are much easier.

As a churchwarden one is responsible for ensuring services continue during an interregnum (no priest in charge), and thankfully we don't have that problem at the moment.

I have enjoyed my term as churchwarden it is a commitment, but I have taken it one step at a time and listened to members of the congregation, and wish my successor every blessing.

Keith and I have seen the congregation at St. Leonard's growing over the past two years, something we have both prayed for.

God Bless you all

*Rachel Hall*

## St. Leonard's Church News

Website: [www.uptonstleonardschurch.co.uk](http://www.uptonstleonardschurch.co.uk)



**Do the arts bring people into your church?**

**Does the local choir or drama club rehearse there?**

**Do you host art exhibitions - or would you like to?**

**If so, this event is for you.**

Designed to bring together artists and church communities, this will be an opportunity to share experience and learn from each other. There will be talks, discussion and interactive arts sessions so you can try for yourself some proven ways of engaging with people through the arts.

You'll have a chance to ask questions and share your own stories or thoughts

**Who's running it**

The Diocese of Gloucester Life Vision Creative Arts Priority Group

**Who's it for**

Church groups wanting to engage with the wider community through the creative arts

**Booking**

The event is free but please book your tickets in advance via [christianartsfestival.org](http://christianartsfestival.org)

**More info**

For more info. Email [SGardiner@glosdioc.org.uk](mailto:SGardiner@glosdioc.org.uk)

Please note there is no onsite parking but plenty of local car parks



### *Who's who at the Parish Church*

**Priest in Charge:**  
Rev Clodagh Ingram

**Curate:**  
Rev James Turk

**Churchwardens:**  
Keith Robbins  
**Vacancy**

**PCC Secretary**  
Sarah Kent  
[pccsecretary@uptonstleonardschurch.co.uk](mailto:pccsecretary@uptonstleonardschurch.co.uk)

**Church Treasurer**

611797

**Vacancy**

**Baptism & Wedding Enquiries:**  
**Church Administrator** - Jenny Cunningham

**Deanery Synod Representative**  
Vacancy

**Nominated Safeguarding Officer**  
Dorothy Cox

**Bell Tower Captain:**  
Charlie Burnett

**Mother's Union**  
Rachel Hall

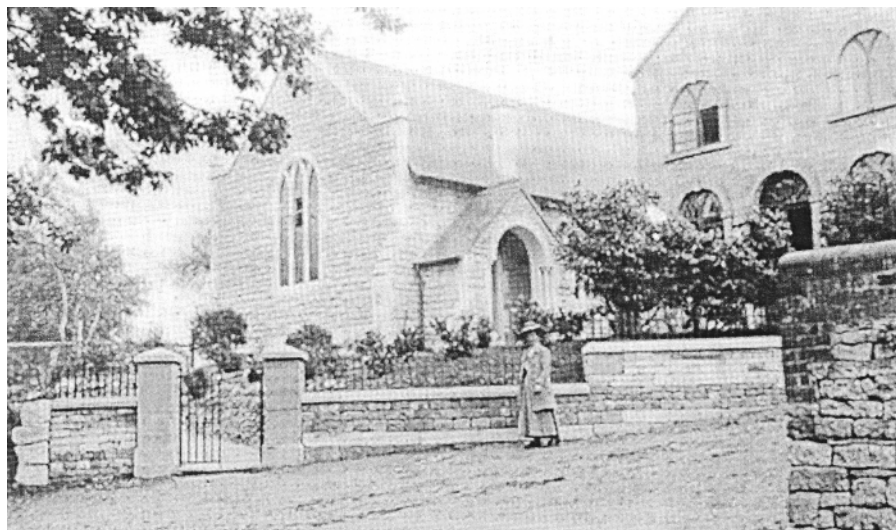
**Church Cleaning Rota**  
Claire Appleyard

**Church Flowers**  
Jenny Cunningham

# This month's feature: An Historical Question

I owe a debt of gratitude to Mike Stratford of the History Group for the loan of a photograph that sparked an idea for this article.

So where is this?

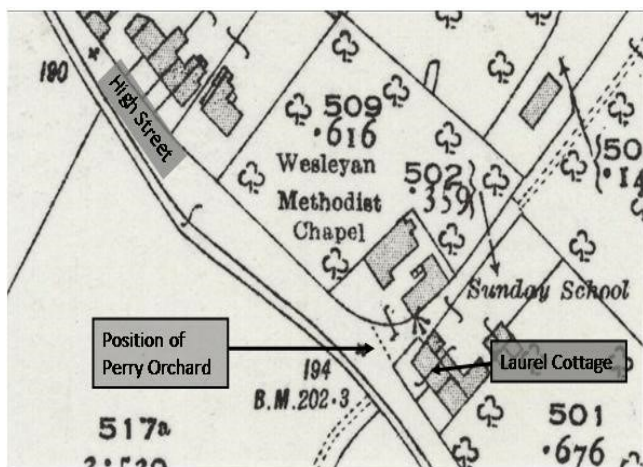


The photograph shows two buildings, the new Methodist Chapel, dated 1913 and an older building dated 1839 which may have been the Sunday school.

Researching both of these, I have set out details which I hope residents of Upton may find interesting.

The place of worship was founded in 1809. The Chapel was situated on the North-East corner of the junction of the High Street and Perry Orchard.

The Location can be best seen on an old map of 1923.



The return of the Religious Census of 1851 (HO129/336./4/8/10) for a building named "Wesleyan Chapel" in Upton St Leonards describes a separate building, with free sittings for 100, used exclusively as a place of worship. The average congregation for the previous 12 months was 30 in the afternoon and 50 in the evening. The return was completed by James Brown, who described himself as their "Leader", and a shoe maker.

In 1914, The London Gazette records "A separate building, duly certified for religious worship, named Wesleyan Chapel situated at High Street, Upton St Leonards in the Parish of Upton St Leonards, County of Gloucester in Gloucester registration district, was on the 27<sup>th</sup> day of November 1914,

registered for solemnising marriages therein. Dated 30<sup>th</sup> Day of November 1914.

All Methodist Churches and Chapels produced Baptismal and Marriage Registers, dating from 1837. These can be viewed, for a fee, at The National Archive at [www.bmdregisters.co.uk](http://www.bmdregisters.co.uk). The Gloucester Archive holds minutes of the Upton St Leonards Methodist Church from 1931 to 1966. Ref. D 2689/2/15.

The Chapel did not have a graveyard. Any Church built after the Burial Act of 1853 is unlikely to have had a graveyard at all.

It would be lovely to hear from anyone who worshiped or was married at this Chapel.

Teresa Clarke

# What's coming up in Upton?

## The UpStagers Drama Group Present



*"Special Features"*

At

*Upton St Leonards Village Hall*

*(A Comedy by Nick Broadhead)*

**6<sup>th</sup>, 7<sup>th</sup> & 8<sup>th</sup> June 2019**

**Performance 7-30pm (Doors open 7-00)**

**Tickets £9-00 (£8 Concessions)  
Refreshments available**

**Tickets Online at  
[www.TICKETSOURCE.CO.UK/THEUPSTAGERS](http://www.TICKETSOURCE.CO.UK/THEUPSTAGERS)**

**BMI**

**ENTERTAINMENT NIGHT  
SATURDAY 11TH MAY 2019**

**8.00 p.m.**

**Dancing to  
the music of  
"Paul Keyse"**

**Open to members and  
signed in guests**



## SUMMER QUIZ



**FOR BMI MEMBERS AND  
SIGNED IN GUESTS  
SATURDAY 22<sup>ND</sup> JUNE  
2019  
AT 8.00P.M.**

**£1.25 PER PERSON FOR TEAMS OF UP TO 6  
(MINIMUM £5 FOR TEAMS OF UP TO 4)**

**ALL PROFIT ON THE NIGHT TO BE  
DONATED TO THE  
BMI CHARITY FOR 2019-2020  
(CHARITY TO BE CONFIRMED IN DUE  
COURSE)**

**PLEASE ADD YOUR NAME TO THE BOOKING SHEET BY**

## *Upton St Leonards Life Party*

**Open to all - put this date in your diary:**

**Saturday, 29<sup>th</sup> June at 7.30pm**



**Songs, Dance and Fun**

**Professional Double Act: Ian and Michelle**

**Details in June USL Life Venue: Village Hall**

### **N.T. Boothroyd Plumbing & Heating Est. 1986**

**All Plumbing & Heating Work  
Undertaken & No Job too small !  
Boiler & Fire Servicing  
Central Heating Systems  
Landlord Certificates, etc.**

**Glos: 01452 552192  
Chelt: 01242 250497  
Mob: 07816 103709  
[ntboothroyd@hotmail.co.uk](mailto:ntboothroyd@hotmail.co.uk)**



### *A La Carte Private Hire*



*Mobile: 07748 235164  
[sandrawalklett@gmail.com](mailto:sandrawalklett@gmail.com)*

*Sandra Walklett*

*Any distance  
Airports, Seaports, etc  
Quotations without  
obligation*



### **B.A. Electrical Services**



**Domestic & Commercial  
Insured & Registered  
For all your Electrical Needs  
A Professional and Friendly  
Service**

**Quality Work at Competitive Prices  
For a Free Estimate call Bernie  
01594 368607 / 07881 981352**

# What's coming up in May?

## This year's annual Dragon Boat Regatta is on Sunday May 12<sup>th</sup> in Gloucester Docks



This extremely popular event is in its 22nd year and was conceived by Steve Markham, the then Chairman of the Gloucester branch of CLIC Sargent, in conjunction with a small group of his committee members in 1998. The event has increased in popularity every

year raising over £400,000 in total for many worthy causes both at home and overseas. In 2014 Gloucester Severn Rotary Club were invited to assist in organising the day. This is when I first became involved with helping behind the scenes.



Throughout the day, 30 teams from all over Gloucestershire compete to win the much coveted "Gloucester Dragonboat Shield", a trophy they hold for the next 12 months. In addition to having fun, the main aim of the event, is to raise as much money as possible for those in need. This year's headline charity is the Pied Piper Appeal.

Over the years many of the teams have entered into the spirit of the day, turning out in a variety of outfits, ranging from green faced Vikings to men in long blonde wigs and short skirts. Almost anything goes! The Mayor of Gloucester and many Civic dignitaries attend, to present the prizes and generally support what has become one of the premiere events in the Gloucester Docks.

The general atmosphere is complemented by a funfair and a number of stalls selling various items from jewellery to sweets. Admission for spectators is free, which has made the whole event an ideal family day out. It is estimated that over 2000 people attended last year and I, along with the other organisers, am hoping for an increase in that number this year.

So, get **Sunday May 12<sup>th</sup>** in your diary, come down to Gloucester Docks, with the family, raise some funds for charity and have a great day out.

What could be better?

See you there.

John Barnes.



### David Cridland Contracting

Fencing, Ground maintenance and groundwork contractor

3 Ton mini-digger with driver available

All types of fencing supplied and erected.  
Hedges cut. Trees pruned. Ground cleared.  
From small gardens to farms, no job too small.  
Service and reliability guaranteed

Fully insured 20 years experience

**01452 311215 or 07836 279974**  
COMMELINES MILL FARM  
UPTON ST LEONARDS GL4 8EG

### Do you need help around your home?

"Being local, I'm a very Handy Man!"



With over 30 years experience, here are just some of the jobs that I can do to help you improve and maintain your home.



Tiling



Bathroom installations



Hall, stairs & landing



Painting & decorating



Friendly, Caring, Trustworthy Service from a Friendly, Caring Person at Really Friendly Prices.

For a FREE quotation please ring me, David Holder on  
Tel: 01452 611866 Mobile: 07977 099996  
or Email: holdermaxine@aol.com

DJH Home Services, Gloucester Established 1984

### MOG'S HAPPY DAYS PRIVATE HIRE

"Why drive when you can be driven?"

LEWIS MORGAN

Chauffeur

07814 947587

lewismorgan58@live.co.uk

Hi! I'm Lewis Morgan, Gloucester born and bred family man. I've been driving safely for 40 years.

Independent Private Hire for up to 4 persons plus ample luggage space.

UK Holiday destinations, Airports, Weddings and Parties. Cheltenham and Chepstow races, shopping trips, hospital appointments.

OAP discount.

Just ask for what you need and see if I can help!

07814 947587

www.mogshappydaysprivatehire.co.uk

# Competition Alert!

## Calling all budding artists/designers

### Could you design our front page?



To put our newsletter together, we have to be forward thinking, so for our December edition we are implementing a children's competition (Primary School age), to design our front cover for Christmas 2019.

With the summer holidays not too far away, this would be an ideal project, so pass the word around and get the kids involved.

Entry details coming up in our June and July editions.



*Linda Munnoch*

### HEALTHY LIVING GROUP

Our guest John shared his journey as a Diabetic 2 patient in April's meeting. John has now reversed his condition with diet alone and is now off all his diabetic medication. Unfortunately, this didn't happen until after he developed kidney failure (a common outcome of this condition). John has now had a kidney transplant after spending time having dialysis. He and his wife explained that their life just stood still while having dialysis as John was too tired to go out and enjoy activities.

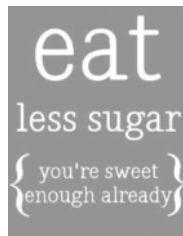
John is now living life to the full and keen to tell others that Diabetes 2 can be reversed today and this has only come to light in the **last five years**. Adopting a low carbohydrate diet which is rich in protein, vegetables and healthy fats such as butter, olive oil and coconut oil allows the body to lower blood sugar levels and reverse the disease. Did you know that a typical helping of 150g of white potato affects blood glucose the same way as nine teaspoons of table sugar! Yes nine!

We had a lively discussion and looked at short videos that inform us on healthy living interventions. Millie shared information from a conference she had attended and gave out cards showing how much sugar is in everyday foods and also the hidden sugars that we may not expect to find in processed foods.

We support eating real food, avoiding processed foods and moving (doing some kind of physical activity) every day.

Our next meeting is on Wednesday, 15th May at the Pavilion at 7pm. We will be looking at Alzheimer's disease and how food and nutrition affects it. If you would like to avoid this condition, come along and find the answers for yourself.

*Millie Barnes*



**USL**  
Village Store

**POST OFFICE**

Mon-Fri  
7am-7pm

Sat  
7am-6pm

Sun  
7am-12pm

**Your Village Store and Post Office**

**SHOP LOCAL**

**SUPPORT LOCAL!**

Rahul and Seeta  
Churchfield Road 01452 618189

**Rachel Harris**  
Dip CFHP MPSPract

**Foot Health Practitioner**  
Home visits for all your footcare needs

Professional and courteous service  
In the Gloucester area

---

**07791 901 220**  
rachelh391@googlemail.com

**Your qualified village electrician**

**MJBoon**  
Electrical

☎ 07773 626241  
✉ matt@mjboonelectrical.co.uk

- Free estimates and advice
- All aspects of electrical work undertaken

**NICEIC**  
DOMESTIC  
INSTALLER



We have put as much in here as space permits.  
 Events happening weekly are only shown for  
 the first month or so

# VILLAGE DIARY

## MAY

|    |     |  |                         |                 |
|----|-----|--|-------------------------|-----------------|
| 1  | Wed | Stitchers.....   | Pavilion.....           | 10.00-12.00p.m  |
| 1  | Wed | Dignity in Dying.....  | Pavilion.....           | 2.00p.m.        |
| 1  | Wed | Bingo.....   | BMI.....                | 8.00p.m.        |
| 1  | Wed | Upstagers Amateur Dramatics.....                                     | Village Hall.....       | 7.30-9.30p.m.   |
| 1  | Wed | Bell Ringing Practice.....   | Bell Tower.....         | 7.30-9.00p.m.   |
| 2  | Thu | Senior Circuits.....   | Pavilion.....           | 10.00-10.45a.m. |
| 2  | Thu | Tai Chi.....   | Village Hall Annex..... | 9.30-10.30a.m.  |
| 2  | Thu | Fitness.....   | Pavilion.....           | 6.00p.m.        |
| 3  | Fri | Pilates.....   | Village Hall.....       | 11.30-12.30p.m. |
| 6  | Mon | Yoga.....  | Village Hall Annex..... | 10.00-11.30a.m. |
| 6  | Mon | Coffee Club.....   | BMI.....                | 10.00-12.00p.m. |
| 6  | Mon | Yoga.....  | Village Hall Annex..... | 12.15-1.45p.m.  |
| 6  | Mon | Yoga.....  | Pavilion.....           | 5.30p.m.        |
| 6  | Mon | Upton WI.....  | Village Hall.....       | 7.30-10.00p.m.  |
| 7  | Tue | Rubbish and Food Waste Week/Garden Waste for those with Brown Bins   |                         |                 |
| 7  | Tue | Needles & Pins.....  | Village Hall Annex..... | 9.45-12.15p.m.  |
| 7  | Tue | Brownies.....  | Pavilion.....           | 5.30p.m.        |
| 7  | Tue | Badminton.....   | Village Hall.....       | 8.30-10.30p.m.  |
| 8  | Wed | Stitchers.....   | Pavilion.....           | 10.00-12.00p.m. |
| 8  | Wed | Dignity in Dying.....  | Pavilion.....           | 2.00p.m.        |
| 8  | Wed | Bingo.....   | BMI.....                | 8.00p.m.        |
| 8  | Wed | Upstagers Amateur Dramatics.....                                     | Village Hall.....       | 7.30-9.30p.m.   |
| 8  | Wed | Bell Ringing Practice.....   | Bell Tower.....         | 7.30-9.00p.m.   |
| 9  | Thu | Senior Circuits.....   | Pavilion.....           | 10.00-10.45p.m. |
| 9  | Thu | Tai Chi.....   | Village Hall Annex..... | 9.30-10.30a.m.  |
| 9  | Thu | Fitness.....   | Pavilion.....           | 6.00p.m.        |
| 10 | Fri | Pilates.....   | Village Hall.....       | 11.30-12.30p.m. |
| 10 | Fri | Copy Date for June issue of USL Life                                 |                         |                 |
| 11 | Sat | Entertainment.....   | BMI.....                | 8.00p.m.        |
| 13 | Mon | Yoga.....  | Village Hall Annex..... | 10.00-11.30a.m. |
| 13 | Mon | Coffee Club.....   | BMI.....                | 10.00-12.00p.m. |
| 13 | Mon | Yoga.....  | Village Hall Annex..... | 12.15-1.45p.m.  |
| 13 | Mon | Yoga.....  | Pavilion.....           | 6.30p.m.        |
| 13 | Mon | Twyver WI.....   | Village Hall.....       | 7.30-10.00p.m.  |
| 14 | Tue | Recycling and Food Waste Week  |                         |                 |
| 14 | Tue | Needles and Pins.....  | Village Hall Annex..... | 9.45-12.15p.m.  |
| 14 | Tue | Brownies.....  | Pavilion.....           | 5.30p.m.        |
| 14 | Tue | Badminton.....   | Village Hall.....       | 8.30-10.30p.m.  |
| 15 | Wed | Stitchers.....   | Pavilion.....           | 10.00-12.00p.m. |
| 15 | Wed | Dignity in Dying.....  | Pavilion.....           | 2.00p.m.        |
| 15 | Wed | Healthy Living Forum.....  | Pavilion.....           | 7.00p.m.        |
| 15 | Wed | Bingo.....   | BMI.....                | 8.00p.m.        |
| 15 | Wed | Upstagers Amateur Dramatics.....                                     | Village Hall.....       | 7.30-9.30p.m.   |
| 15 | Wed | Bell Ringing Practice.....   | Bell Tower.....         | 7.30-9.00p.m.   |
| 16 | Thu | Senior Circuits.....   | Pavilion.....           | 10.00-10.45a.m. |
| 16 | Thu | Tai Chi.....   | Village Hall Annex..... | 9.30-10.30a.m.  |
| 16 | Thu | Fitness.....   | Pavilion.....           | 6.00p.m.        |
| 16 | Thu | History Group - Quaint & Quirky.....                                 | Village Hall.....       | 7.45-9.15p.m.   |
| 17 | Fri | Pilates.....   | Village Hall.....       | 11.30-12.30p.m. |
| 20 | Mon | Coffee Club.....   | BMI.....                | 10.00-12.00p.m. |
| 20 | Mon | Yoga.....  | Pavilion.....           | 6.30p.m.        |
| 20 | Mon | Abbeydale Garden Club.....   | Village Hall.....       | 7.30-9.45p.m.   |
| 21 | Tue | Rubbish and Food Waste Week/Garden Rubbish for those with Brown Bins |                         |                 |
| 21 | Tue | Needles and Pins.....  | Village Hall Annex..... | 9.45-12.15p.m.  |
| 21 | Tue | Brownies.....  | Pavilion.....           | 5.30p.m.        |
| 21 | Tue | Badminton.....   | Village Hall.....       | 8.30-10.30p.m.  |
| 22 | Wed | Ladies Probus.....   | BMI.....                | 10.00a.m.       |
| 22 | Wed | Stitchers.....   | Pavilion.....           | 10.00-12.00p.m. |
| 22 | Wed | Dignity in Dying.....  | Pavilion.....           | 2.00p.m.        |
| 22 | Wed | Bingo.....   | BMI.....                | 8.00p.m.        |
| 22 | Wed | Upstagers Amateur Dramatics.....                                     | Village Hall.....       | 7.30-9.30p.m.   |
| 22 | Wed | Bell Ringing Practice.....   | Bell Tower.....         | 7.30-9.00p.m.   |
| 23 | Thu | Senior Circuits.....   | Pavilion.....           | 10.00-10.45p.m. |



|                |     |   |                               |                 |
|----------------|-----|---|-------------------------------|-----------------|
| 23             | Thu | Tai Chi.....                                | Village Hall Annex.....       | 9.30-10.30a.m.  |
| 23             | Thu | Fitness.....                                | Pavilion.....                 | 6.00p.m.        |
| 23             | Thu | Ramblers.....                               | Pavilion.....                 | 7.30p.m.        |
| 24             | Fri | Pilates.....                                | Village Hall.....             | 11.30-12.30p.m. |
| 27             | Mon | Coffee Club.....                            | BMI.....                      | 10.00-12.00p.m. |
| 27             | Mon | Yoga.....                                   | Pavilion.....                 | 6.30p.m.        |
| 27             | Mon | Camera Club.....                            | BMI.....                      | 7.00-9.00p.m.   |
| 28             | Tue | Recycling and Food Waste Week               |                               |                 |
| 28             | Tue | Needles & Pins.....                         | Village Hall Annex.....       | 9.45-12.15p.m.  |
| 28             | Tue | Badminton.....                              | Village Hall.....             | 8.30-10.30p.m.  |
| 29             | Wed | Ladies Probus.....                          | BMI.....                      | 10.00a.m.       |
| 29             | Wed | Stitchers.....                              | Pavilion.....                 | 10.00-12.00p.m. |
| 29             | Wed | Dignity in Dying.....                       | Pavilion.....                 | 2.00p.m.        |
| 29             | Wed | Bingo.....                                  | BMI.....                      | 8.00p.m.        |
| 29             | Wed | Upstagers Amateur Dramatics.....            | Village Hall.....             | 7.30-9.30p.m.   |
| 29             | Wed | Bell Ringing Practice.....                  | Bell Tower.....               | 7.30-9.00p.m.   |
| 30             | Thu | Senior Circuits.....                        | Pavilion.....                 | 10.00-10.30a.m. |
| 30             | Thu | Tai Chi.....                                | Village Hall Annex.....       | 9.30-10.30a.m.  |
| 30             | Thu | Get Together Club.....                      | Village Hall.....             | 2.30-4.30p.m.   |
| 30             | Thu | Fitness.....                                | Pavilion.....                 | 6.00p.m.        |
| 31             | Fri | Pilates.....                                | Village Hall.....             | 11.30-12.30a.m. |
| <b>J U N E</b> |     |   |                               |                 |
| 3              | Mon | Parish Council Meeting.....                 | Pavilion.....                 | 7.30p.m.        |
| 3              | Mon | Lady Downe Charity.....                     | Upton St Leonards School..... | 7.30p.m.        |
| 3              | Mon | Upton WI.....                               | Village Hall.....             | 7.30-10.00p.m.  |
| 6              | Thu | Upstagers "Special Features".....           | Village Hall.....             | 7.00p.m.        |
| 7              | Fri | Upstagers "Special Features".....           | Village Hall.....             | 7.00p.m.        |
| 8              | Sat | Upstagers "Special Features".....           | Village Hall.....             | 7.00p.m.        |
| 10             | Mon | Twyver WI.....                              | Village Hall.....             | 7.30-10.00p.m.  |
| 10             | Mon | Copy Date for July issue of USL Life        |                               |                 |
| 11             | Tue | Healthy Living Forum.....                   | Pavilion.....                 | 7.00p.m.        |
| 17             | Mon | Abbeydale Garden Club.....                  | Village Hall.....             | 7.30-9.45p.m.   |
| 19             | Wed | Ladies Probus.....                          | BMI.....                      | 10.00a.m.       |
| 22             | Sat | BMI Summer Quiz.....                        | BMI.....                      | 8.00p.m.        |
| 24             | Mon | Camera Club.....                            | Village Hall.....             | 7.00-9.00p.m.   |
| 27             | Thu | Get Together Club.....                      | Village Hall.....             | 2.30-4.30p.m.   |
| 29             | Sat | USL Life Party (for all).....               | Village Hall.....             | 7.30p.m.        |
| <b>J U L Y</b> |     |   |                               |                 |
| 1              | Mon | Parish Council Meeting.....                 | Pavilion.....                 | 7.30p.m.        |
| 1              | Mon | Upton WI.....                               | Village Hall.....             | 7.30-10.00p.m.  |
| 8              | Mon | Twyver WI.....                              | Village Hall.....             | 7.30-10.00p.m.  |
| 10             | Wed | Healthy Living Forum.....                   | Pavilion.....                 | 7.00p.m.        |
| 10             | Wed | Copy Date for August issue of USL Life..... |                               |                 |
| 15             | Mon | Abbeydale Garden Club.....                  | Village Hall.....             | 7.30-9.45p.m.   |
| 17             | Wed | Ladies Probus.....                          | BMI.....                      | 10.00a.m.       |
| 22             | Mon | Camera Club.....                            | Village Hall.....             | 7.00-9.00p.m.   |
| 25             | Thu | Get Together Club.....                      | Village Hall.....             | 2.30-4.30pm     |

**Contact Paula Quinn to get your event in the diary**

**TURN TO US FOR  
HELP AND SUPPORT**

In your time of need we'll take care of all the funeral arrangements.  
Call us 24 hours a day.

- Funeral Pre-payment Plan
- Memorials

**SELIM SMITH & CO  
FUNERAL DIRECTORS**

**HERON LODGE, PAINSWICK ROAD  
GLOUCESTER GL4 4QJ**

**01452 502685**



Part of Dignity plc. A British Company



**The BMI Club**  
(Est 1898)  
Bondend Road  
Upton St Leonards

Members Club, new members welcome.

Two bars, wide screen TV with Sky/BT Sports. Snooker /Pool Tables. Skittle Alley.  
Regular entertainment nights.  
Function room hire.

Annual Fee £10 plus £5 joining fee.  
Senior Citizens half price

To join just call in and see Alec our Steward for details.  
Open Mon-Fri lunchtimes & evenings.  
Sat-Sun Open all day.  
<http://www.bmiclub.co.uk/>  
**Tel. 01452 616384**




Fast, Friendly & Dedicated Service  
In Your Local Area

Family Run Business  
Est. In 1968

**CEDAR MOTOR HOUSE LTD**  
Grove Court, Upton Hill  
Gloucester GL4 8DA  
01452 617240 or 07976 322735

MOT TESTING WHILE YOU WAIT FOR PETROL AND DIESEL VEHICLES  
Diagnostic Fault Code Reading.  
Vehicle Servicing & Mechanical Repairs.  
Clutches & Timing Belts Replaced, Top Quality Tyres,  
Batteries & Exhausts Fitted AT Competitive Prices.  
Insurance & Accident Repairs.  
Welding Service.

Servicing for New & Used Vehicles Using Genuine Parts  
If Required, at Much Lower Rates than Main Agents. All  
Parts and Repairs Complying with Manufacturers  
Warranty Requirements.  
Lube Service from £89 incl VAT  
Interim Service from £129 incl VAT  
Full Service from £175 incl VAT

*We are situated on Upton Hill in Upton St Leonards.  
Grove Court is 100 yards past the Kings Head Pub on the  
right hand side. Collection service available.*



## More photos from the Spring Show



A Winning Entry! Teresa Clarke  
Class E – 26 "A Picture – Handicraft"

### UPTON ST LEONARDS LIFE Web site: <http://usllife.org.uk>

To contact us, use the website above or the postbox by the Village Hall main door, or use the contact details that appear below:

This month's editor: Andrea Dawson  
Editors: Andrea Dawson

Andy Russell  
Barbara Swindin  
Peter Wilson

Company Secretary: Cliff Alderman

Treasurer: Owen Stinchcombe

Feature writers: Teresa Clarke  
Christina Caldwell  
Linda Munnoch  
Ann Morphew

Church pages: Rachel Middleton

Clubs / Societies / Organisations: Catherine McLean

Diary: Paula Quinn

Advertising: Contact: Andy Russell

Admin Support: Janine Black

Distribution: Jenny Cunningham

Photography: Jim Browne

Proof Readers: Carol Hardacre  
Christine Ellson  
Kate Davies

USL Life is published by USL Life CIC, a Limited Company, and is printed at Leyhill Prison.

**DISCLAIMER:** USL Life welcomes adverts for goods and services but reminds readers to make their own checks before entering into any contract or other arrangements with advertisers, as USL Life cannot be held responsible for the accuracy of the advertisements.

Next month's editor is Andy Russell - see the list on the right for contact details.

### Little Court Cottages

Cottages for long rent, and self-catering accommodation for short breaks, in Upton St Leonards, perfect for visiting friends and family.

Email: [info@littlecourtcottages.co.uk](mailto:info@littlecourtcottages.co.uk)

Tel: 01452 615150

[www.littlecourtcottages.co.uk](http://www.littlecourtcottages.co.uk)



### Brothertons

Accountants & Tax Advisors

Personalised, friendly service to local business owners and individuals

All Aspects of Accountancy:

- Self Assessment Tax Returns
  - Sole Trader Accounts
  - Limited Companies
  - VAT
  - Payroll
  - Bookkeeping
- Local family firm  
Established 1998  
Free initial meeting  
Fixed quotes*

2 Abbeymead Avenue, Gloucester GL4 5ER

01452 311711

[www.brothertons.co.uk](http://www.brothertons.co.uk)

email [info@brothertons.co.uk](mailto:info@brothertons.co.uk)



**FREE HEARING TESTS**

now available with Andrew Bird Hearing

#### Wax Removal

Andrew Bird Hearing is now able to offer a wax removal service.

£10 Inspection Fee

One Ear £40 - Two Ears £60

Centres in Cheltenham and Gloucester

To book your appointment or for information call

**01242 262551**

Hesters Way Community Resource Centre,  
Cassin Drive, Cheltenham. GL51 7SU

[www.andrewbirdhearing.co.uk](http://www.andrewbirdhearing.co.uk)